



We possess technical expertise and operational capabilities in any kind of Specialist Works that you might need for your bridge projects.

STAY CABLE (SC)



Stay Duct Welding



Cable Installation



SC Equipment Setup



SC Stressing



Stay Duct Installation

FORMWORK & FALSEWORK SYSTEMS



Auto Climbing System (ACS)



Heavy Duty Scaffolds



Box Girder Formwork

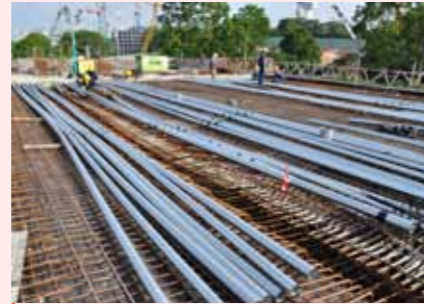


Girder Moulds



Wall Form

POST-TENSIONING (PT) **DSI**



Duct Laying



PT Stressing



PT Grouting



PT Anchorages



Jack Calibration



External PT

INCREMENTAL LAUNCHING METHOD (ILM)



ILM for Concrete Bridge



Pulling Method



Computerised Central Control System



ILM for Steel Bridge



Jack-and-Push Method

FORM TRAVELLERS (FT)



Overhead FT



Underslung FT



We can collaborate as your Specialist Subcontractor, Solution Provider, System Designer, Equipment Supplier or in any form that suits your project planning and budget.

PRECASTING (PCa)



Segment PCa Yard



Girder PCa Yard



Beam Trolley



Long-Line Method



Short-Line Method



Mini Gantry



PCa Crosshead



PCa Wing Slab

LAUNCHING GANTRIES (LG)



Heavy Duty LG



Light Duty LG



Medium Duty LG



Single Span LG



Wide LG



Slim LG

GIRDER LAUNCHING



Full Span Launching



Girder Launching



Launched by Crawler Cranes



Launched by Portal Cranes



Side Lifting



Rear Feeding

SEGMENTAL ERECTION



Cantilever Segment Erection



Crossover Erection



EJ Segment Erection



Launched by Crane



Segment Holder



Span-by-Span Method

TRANSPORTERS



Rail Car on Deck



Tyred Buggy on Ground



Tyred Buggy on Deck



The Utraconians, Batch 2017



About UTRACON

Incorporated in 1998, UTRACON was then a local start-up in Singapore poised to compete in a highly competitive post-tensioning market against the established specialists primarily from Europe. Through sheer hard work and excellent work ethics, we won over many clients from our competitors and by the turn of the millennium, we had emerged as the largest post-tensioning specialist contractor in Singapore. We are still retaining this reputation to date, not only being the largest by market share, but also the most competitive one.

Having earned a market reputation as a trusted and valued construction partner, UTRACON was always given opportunities to get involved as a first-timer in various specialist works of a bridge construction project, besides the existing post-tensioning works. Such a privilege granted must be accredited to our engineers who were not only proficient at engineering fundamentals, but also capable in providing practical and cost-effective solutions. This was instrumental in our next phase of business expansion into a full-fledged specialist contractor in the bridge construction sector. With the experiences and expertise accumulated over the years, we are now being recognised as the market leader who could provide one-stop shop specialist services and construction engineering for all kind of bridges.

Today, UTRACON is a strong 1000-staff specialist engineering firm with presence in more than 15 countries. Our staff are passionate about delivering the highest standards of performance in all our projects and to all our clients. We strive at all time to ensure timely completion of a project within the budget and without compromising on safety and quality. We proudly call ourselves Utraconians.

This brochure is launched this year-2018 to commemorate the 20th year anniversary of UTRACON.

HEAD OFFICE

SINGAPORE
Utracon Corporation Pte Ltd
5, Joo Koon Way, Singapore 628944
Tel: +65 6415 3078
Fax: +65 6863 1928
Email: utracon@utracon.com

REGIONAL OFFICES

SINGAPORE
Utracon Structural Systems Pte Ltd
5, Joo Koon Way,
Singapore 628944
Tel: +65 6415 3078
Fax: +65 6863 1928
Email: utracon@utracon.com

MALAYSIA
Utracon Structural Systems
Sdn Bhd
Kuala Lumpur Office:
Suite A-11-03, 11th Floor,
Lobby 1 Block A,
Wisma Damansara Intan,
No. 1 Jalan SS20/27,
47400 Petaling Jaya,
Selangor, Malaysia
Tel: +603 7710 8818
Fax: +603 7718 2983
Email: utraconmsia@utracon.com
utraconki@utracon.com

Johor Bahru Office:
No. 51-01 & 51-02, Jalan Molek 1/8,
Taman Molek, 81100 Johor Bahru,
Johor, Malaysia
Tel: +607 355 9799
Fax: +607 354 8799
Email: utraconmsia@utracon.com

PHILIPPINES
Utracon Philippines, Inc
2704 East Tower,
Philippine Stock Exchange Center,
Ortigas Center,
1605 Pasig City,
Metro Manila, Philippines
Email: utraconph@utracon.com

INTERNATIONAL
Utracon Overseas Pte Ltd
5, Joo Koon Way,
Singapore 628944
Tel: +65 6415 3078
Fax: +65 6863 1928
Email: utracon@utracon.com

VIETNAM
Utracon Vietnam Co., Ltd
HCMC Office:
3rd Floor, LA 03-05,
Lexington Building,
67 Mai Chi Tho Avenue,
An Phu Ward, District 2,
Ho Chi Minh City, Vietnam
Tel: +84 28 2253 9588
Fax: +84 28 2253 9589
Email: utraconvn@utracon.com

Hanoi Office:
3rd Floor, CT1 Van Khe Building,
Van Khe Urban Area,
Ha Dong District,
Hanoi, Vietnam
Tel: +84 24 6325 2182
Fax: +84 24 6325 2187
Email: utraconvn@utracon.com

MYANMAR
Utracon Myanmar Co., Ltd
Unit 08-03, Level 8, Crystal Tower,
Junction Square,
Between Pyay Road and
Kyun Taw Road,
Kamaryut Township,
Yangon, Myanmar
Tel: +925 0513 089
Email: utraconmm@utracon.com



www.utracon.com



We have ventured into many burgeoning markets in Southeast Asia, South Asia, MENA and East Africa; we could expand to any where upon your request.

SOME OF OUR PROJECTS

Jinja Bridge



• UGANDA

Hledan Flyover



ALGERIA •

Oo Yin Chaung Bridge



• MYANMAR

Tamwe Flyover



U.A.E •



ALGERIA •



LAOS •



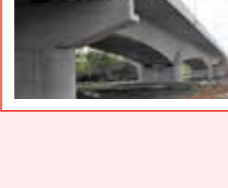
BRUNEI •



• INDONESIA

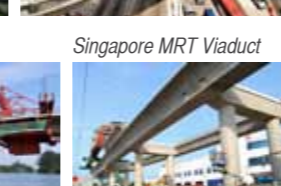


• VIETNAM



BANGLADESH •

SINGAPORE •



• MALAYSIA



BEARINGS & EXPANSION JOINTS (EJ)



Bearing Replacement



Elastomeric Bearing



Strip Seal EJ



Pot Bearing

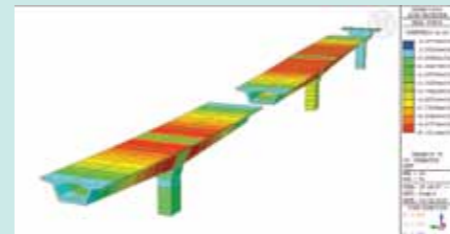


Elastomeric EJ



Finger EJ

CONSTRUCTION ENGINEERING (CE)



Prior to the construction of a bridge, it is essential to carry out a complete CE analysis to ensure the bridge could be constructed safely and accurately. This is because bridge structures are normally subject to more severe temporary load cases and deformations in the construction stages.

Our engineers and professionals are able to provide the CE services in accordance with the state-of-the-art practices and in conformance to international design codes such as AASHTO, Eurocode, BS Standards or specific codes of any countries. Our services include:

- Stage by stage and time dependent analysis
- Stress check and deflection calculation
- Precamber design
- Camber control programme
- Geometry control
- Survey monitoring plan
- Temporary works design and shop drawing
- Method statement and work procedure
- Value engineering and alternative design

HEAVY LIFTING & SLIDING



Sky Bridge Lifting



Caisson Loadout



Roof Truss Sliding

STRUCTURAL STRENGTHENING



Fibre Wrap



External Prestressing



Underpinning

CONSTRUCTION ENGINEERING / BEARINGS & EXPANSION JOINTS / HEAVY LIFTING & SLIDING / STRUCTURAL STRENGTHENING



THE ONE-STOP
SPECIALIST
FOR ALL BRIDGE CONTRACTORS

