



Specialized in

Bridge Bearings
Anti-Seismic Devices
Base Isolators
Expansion Joints

DAECHANG Corp.



Greetings

대창이엔지는 1992년 창립 이래 20여 년간 국내 주요 도로와 철도 교량에 교량받침 및 신축이음장치를 납품, 시공한 전문 업체로, 안전하고 경제적인 제품을 개발, 공급함으로써 국가 기반 시설 발전에 일익을 담당해 왔으며, 보다 나은 서비스를 제공하기 위하여 R&D Center를 보완, 강화하였고, 서울 사무소를 개소하였습니다.

저희 대창이엔지는 지속적 제품 개발, 연구, 관리, 경영 조직화로 Global 경쟁력을 갖추고, 고객이 만족하고 신뢰하는 기업이 되도록 경주할 것을 약속 드립니다.

감사합니다.

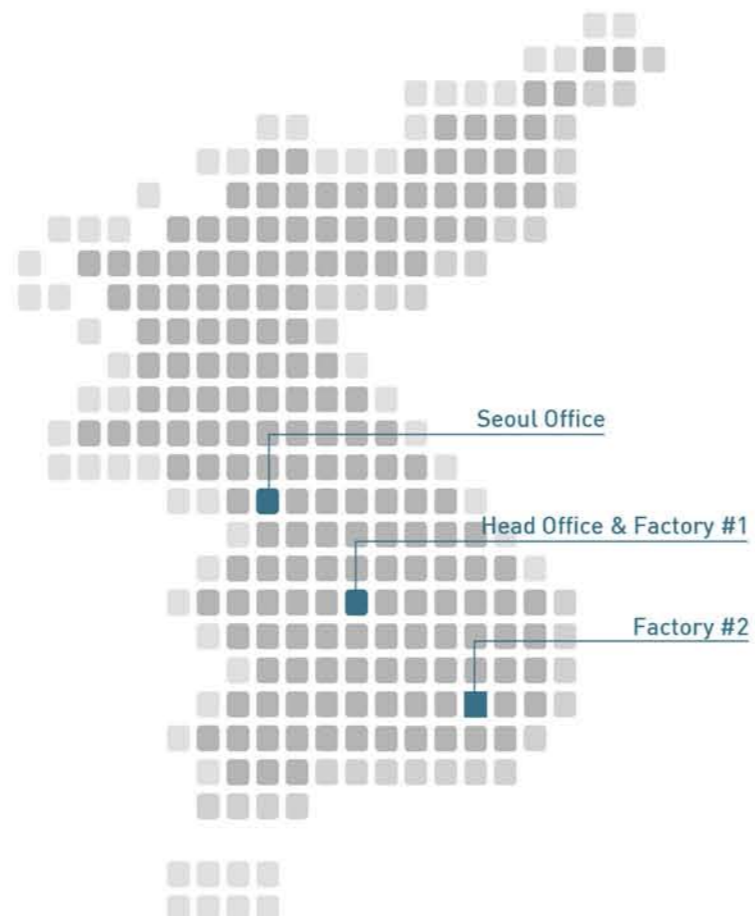
Since its foundation, Daechang has been creating better solution for bridges such as high-speed railways and highways to fulfill our quality philosophy.

Daechang has strengthened its position as the pre-eminent company by its high technology and expertise accumulated from nearly 20 years' experience.

Playing a leading in creating a better quality of life and environment through know-how and up-to-date technologies.

Daechang strives to be a trustworthy company by satisfying our clients with superior quality.

Organization



Business Fields

Design & Engineering

대창이엔지는 교량용 교량받침과 신축이음장치의 설계, 제조, 시공, 유지보수의 Total Service를 제공하고 있으며, 과업의 설계 단계부터 충분한 검토와 연구로 최적의 제품을 최상의 품질로 제공합니다.

Construction

20여년 간 500여개 이상의 현장에 자재 납품 및 시공 경험을 바탕으로 자체 검토, 분석 및 고객과의 긴밀한 의견 교환을 통해 수립된 스케줄에 따라 안전하고 성실한 시공을 수행하고 있습니다.

Technology Development

오랜 경험과 Know-how로 축적한 기술을 제품 개발 및 설계에 적용하고, 이를 각각의 현장에 특화하여 최적의 제품을 제공하고 있습니다.

Maintenance

교량 공용기간 중 발생하는 교량받침 및 신축이음장치의 보수, 보강, 교체 시 교량에 손상을 주지 않고 빠른 시간 안에 작업할 수 있는 특수 공법을 보유하고 있습니다.

As an Engineering Contractor providing total services, Daechang has been processing the competency to undertake many projects including turnkey projects. Daechang conducts research in the design and engineering technologies to construct high effective & economical devices for highway bridges and railway bridges.

Holding a remarkable record of supply and construction for approximately 500 projects, Daechang is well recognized for its advanced technology and construction management system, thus, opening up new markets by expanding its range of business interests to overseas markets.

Technology Development and integrated design system, being backed up by all construction related knowhow in the fields of construction design, management, information, engineering and construction skills, which is applied to our all projects.

Daechang has executed any kind of maintenance requirement such as inspection, repair and rehabilitation.

Chronicle

Re-start (2010~)

기술연구인력 확보 및 조직의 재정비를 통하여 축적된 기술의 표준화, 제품 연구 개발에 힘쓰는 한편 서울 사무소를 개소하여 국내시장 점유율 확대 및 해외시장 진출을 꾀하고 있습니다.

Second Step (2007~2009)

풍부한 현장경험과 제조 경험을 통해 체득한 품질관리 능력을 바탕으로 하여, 클린사업장 인증, 이노비즈 인증획득, 기업부설연구소 설립을 인증 받았습니다.

Growth (1999~2006)

외적인 성장뿐 아니라 전문 건설업 면허증 등록, 벤처기업 등록, ISO9001인증 획득 등 꾸준히 내실을 다졌으며, 충북 음성에 제조시설을 확충하고 원가절감 및 품질 관리 향상을 도모하였습니다.

Foundation & Challenges (1992~1998)

1992년 창립 이래 국내 중소 교량 및 장대교량 등 대형 프로젝트에 교량받침 및 신축이음장치를 납품, 시공하였습니다.

Seoul Office launched for domination extending not only domestic but also overseas, concentrating on superior quality under the flag of better than yesterday with new state of mind.

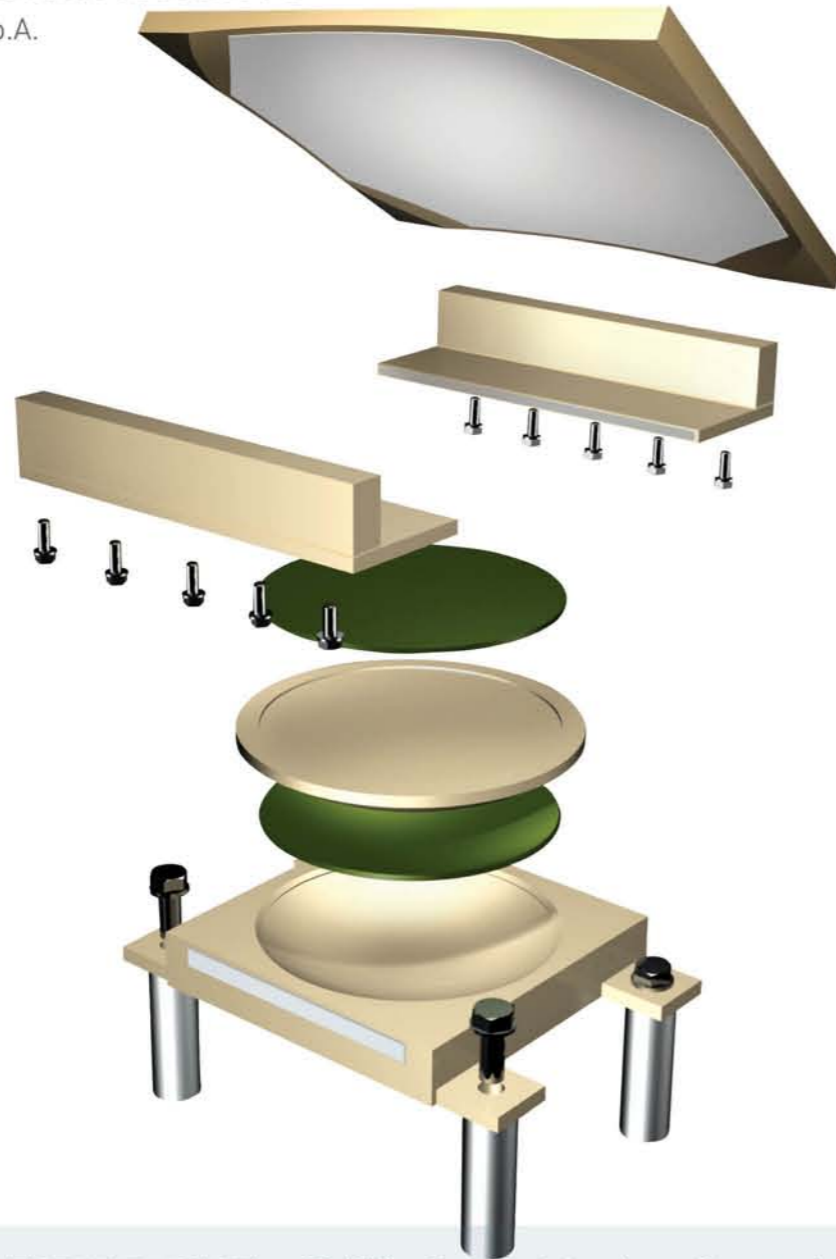
Based on the knowledge and skills acquired a number of construction experience. We continued to develop our technologies and cooperated with others, acquired INNO-BIZ certification issued by Small & Medium Business Administration.

Daechang had a great increase in domestic contracts. During this time we restructure our organizations to fulfill customer's satisfaction. Facilities for manufacturing from outting materials to painting equipped. Acquired ISO9001 certification refer to Bearings, Expansion Joints, Sound Walls, Bridge Inspection Apparatus in February 2006.

Fouded in September 1992 as a Seoul Office of Daechang Metal Co.,Ltd, and registered Daechang Corp. in September 1998. Supplying and installing of bearings and expansion joints for several major Expressway projects such Daejeon-Dangjin Expressway, Seohae Expressway carried out.

SPI Sliding Pendulum Isolators

Licensed product of ALGA S.p.A.



SPI (Sliding Pendulum Isolators)는 지진으로부터 구조물의 안정성을 확보하기 위하여 구조물의 진동을 조절하고 가능한 구조물에 미치는 지진력을 최소화하기 위한 지진격리 받침으로서, 상시 안전한 하중전달 기능 및 원활한 신축·팽창거동, 회전기능을 수행하고, 지진발생 시 구조물에 작용하는 지진력을 최소화하여 구조물의 안정성을 확보하며, 지진 경험 후 완전 복원되는 최상의 지진격리 받침.

특징

- 특수재료의 사용으로 인한 최적의 받침규격.
- 진자운동에 의한 지진 에너지 소산능력 탁월.
- 지진경험 후 복원력이 탁월함.
- 고온저항성이 우수하고 내구성이 탁월한 마찰판을 사용함으로써 내구연한이 큼.

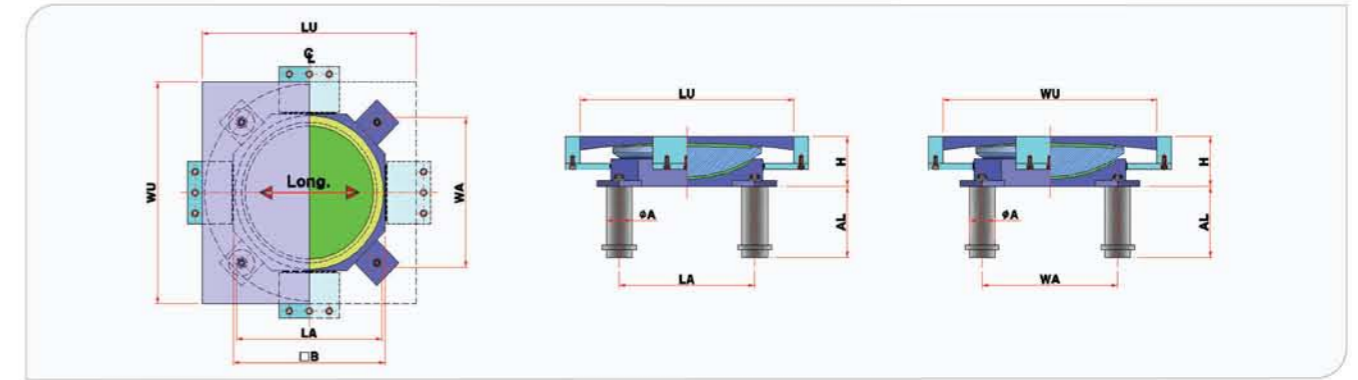
SPIs(Sliding Pendulum Isolators) are self re-centering bearings after seismic events, the most developed seismic protection systems of civil structures, which control the structural vibrations, reduce as much as possible the forces on the structures and keep them in service or with negligible damages after the seismic events. SPIs transmit loads from the superstructure to the substructure, and accommodate movements and rotations at serviceability limit states. SPI with an innovative material for the sliding surface to ensure an optimum capacity of carrying the vertical loads, a high wear resistance to guarantee a long durability of the device in service static conditions, good energy dissipation by friction in case of earthquake motion and a good resistance to high temperatures that occurs during the dissipation by friction.

Features

- Optimum dimension by utilizing an innovative material for the sliding
- Excellent dissipation of seismic energy by pendulum movements
- Excellent self re-centering after seismic events
- Long life
- High load bearing capacity

Sliding Pendulum Isolators

고정단 Fixed Type

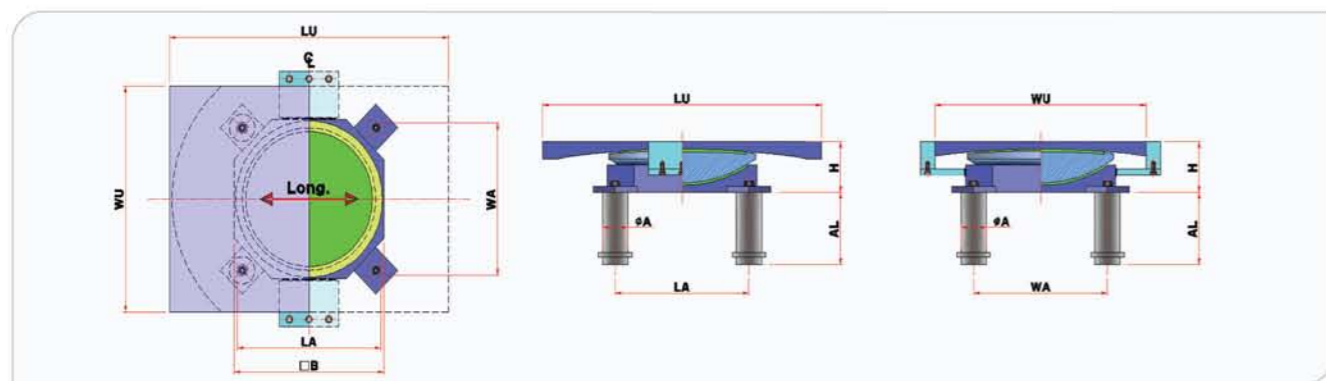


V(kN)	H _{SLS} (kN)	H _{ULS} (kN)	ΔSLS	ΔULS	LU	WU	□B	H	LA	WA	φA	AL
2000	100	160	± 75	± 150	780	600	330	114	330	330	45	220
3000	150	210	± 75	± 150	840	660	380	117	370	370	45	220
4000	200	290	± 75	± 150	880	700	420	122	400	400	45	220
5000	250	360	± 75	± 150	920	730	480	132	460	460	45	220
6000	300	430	± 75	± 150	970	790	510	145	490	490	45	220
7000	350	510	± 75	± 150	1000	820	540	149	520	520	60	280
8000	400	580	± 75	± 150	1040	860	570	156	550	550	60	280
9000	450	650	± 75	± 150	1070	880	600	159	580	580	60	280
10000	500	720	± 75	± 150	1090	910	640	173	610	610	65	300
12000	600	870	± 75	± 150	1150	960	690	183	660	660	65	300
13000	650	940	± 75	± 150	1170	990	710	186	680	680	70	320
14000	700	1020	± 75	± 150	1190	1010	730	189	690	690	75	350
15000	750	1090	± 75	± 150	1210	1030	760	191	720	720	75	350
16000	800	1110	± 75	± 150	1250	1060	800	197	760	760	75	350
18000	900	1210	± 75	± 150	1290	1100	850	206	800	800	80	370
20000	1000	1350	± 75	± 150	1320	1140	900	212	850	850	80	370
22000	1100	1480	± 75	± 150	1360	1170	940	222	890	890	85	400
24000	1200	1620	± 75	± 150	1390	1210	980	227	920	920	85	400
25000	1200	1680	± 75	± 150	1410	1220	1000	234	930	930	85	400
26000	1200	1750	± 75	± 150	1430	1250	1010	239	940	940	85	400
28000	1200	1890	± 75	± 150	1460	1280	1040	243	970	970	85	400
30000	1200	1900	± 75	± 150	1500	1310	1110	244	1030	1030	100	460
35000	1200	2210	± 75	± 150	1570	1380	1180	253	1090	1090	100	460
40000	1200	2530	± 75	± 150	1630	1450	1240	262	1150	1150	105	490
45000	1200	2850	± 75	± 150	1690	1510	1300	271	1210	1210	110	520
50000	1200	3160	± 75	± 150	1830	1650	1420	276	1310	1310	135	630

※ 하부콘크리트 설계기준강도 27MPa 기준임.(단, 28,000kN이상은 35MPa 기준)
 ※ 상기 치수는 표준치수로서 교량특성에 따라 변경될 수 있음.
 ※ Design strength of the lower concrete is 27MPa(For more than 28000kN, 35MPa)
 ※ The dimensions shown on the above are based on the standard specification and subject to change.

Sliding Pendulum Isolators

일방향가동단 Guided Type

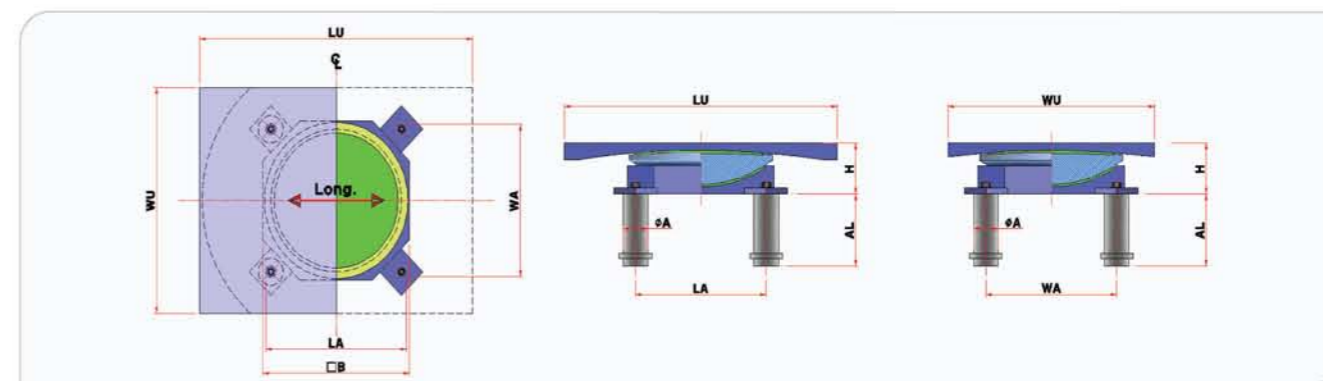


V(kN)	H _{SLS} (kN)	H _{ULS} (kN)	∠SLS	∠ULS	LU	WU	□B	H	LA	WA	∅A	AL
2000	100	160	± 75	± 150	780	600	330	114	330	330	45	220
3000	150	210	± 75	± 150	840	660	380	117	370	370	45	220
4000	200	290	± 75	± 150	880	700	420	122	400	400	45	220
5000	250	360	± 75	± 150	920	730	480	132	460	460	45	220
6000	300	430	± 75	± 150	970	790	510	145	490	490	45	220
7000	350	510	± 75	± 150	1000	820	540	149	520	520	60	280
8000	400	580	± 75	± 150	1040	860	570	156	550	550	60	280
9000	450	650	± 75	± 150	1070	880	600	159	580	580	60	280
10000	500	720	± 75	± 150	1090	910	640	173	610	610	65	300
12000	600	870	± 75	± 150	1150	960	690	183	660	660	65	300
13000	650	940	± 75	± 150	1170	990	710	186	680	680	70	320
14000	700	1020	± 75	± 150	1190	1010	730	189	690	690	75	350
15000	750	1090	± 75	± 150	1210	1030	760	191	720	720	75	350
16000	800	1110	± 75	± 150	1250	1060	800	197	760	760	75	350
18000	900	1210	± 75	± 150	1290	1100	850	206	800	800	80	370
20000	1000	1350	± 75	± 150	1320	1140	900	212	850	850	80	370
22000	1100	1480	± 75	± 150	1360	1170	940	222	890	890	85	400
24000	1200	1620	± 75	± 150	1390	1210	980	227	920	920	85	400
25000	1200	1680	± 75	± 150	1410	1220	1000	234	930	930	85	400
26000	1200	1750	± 75	± 150	1430	1250	1010	239	940	940	85	400
28000	1200	1890	± 75	± 150	1460	1280	1040	243	970	970	85	400
30000	1200	1900	± 75	± 150	1500	1310	1110	244	1030	1030	100	460
35000	1200	2210	± 75	± 150	1570	1380	1180	253	1090	1090	100	460
40000	1200	2530	± 75	± 150	1630	1450	1240	262	1150	1150	105	490
45000	1200	2850	± 75	± 150	1690	1510	1300	271	1210	1210	110	520
50000	1200	3160	± 75	± 150	1830	1650	1420	276	1310	1310	135	630

※ 하부콘크리트 설계기준강도 27MPa 기준임.(단, 28,000kN이상은 35MPa 기준)
 ※ 상기 치수는 표준치수로서 교량특성에 따라 변경될 수 있음.
 ※ Design strength of the lower concrete is 27MPa(For more than 28000kN, 35MPa)
 ※ The dimensions shown on the above are based on the standard specification and subject to change.

Sliding Pendulum Isolators

양방향가동단 Multi Type

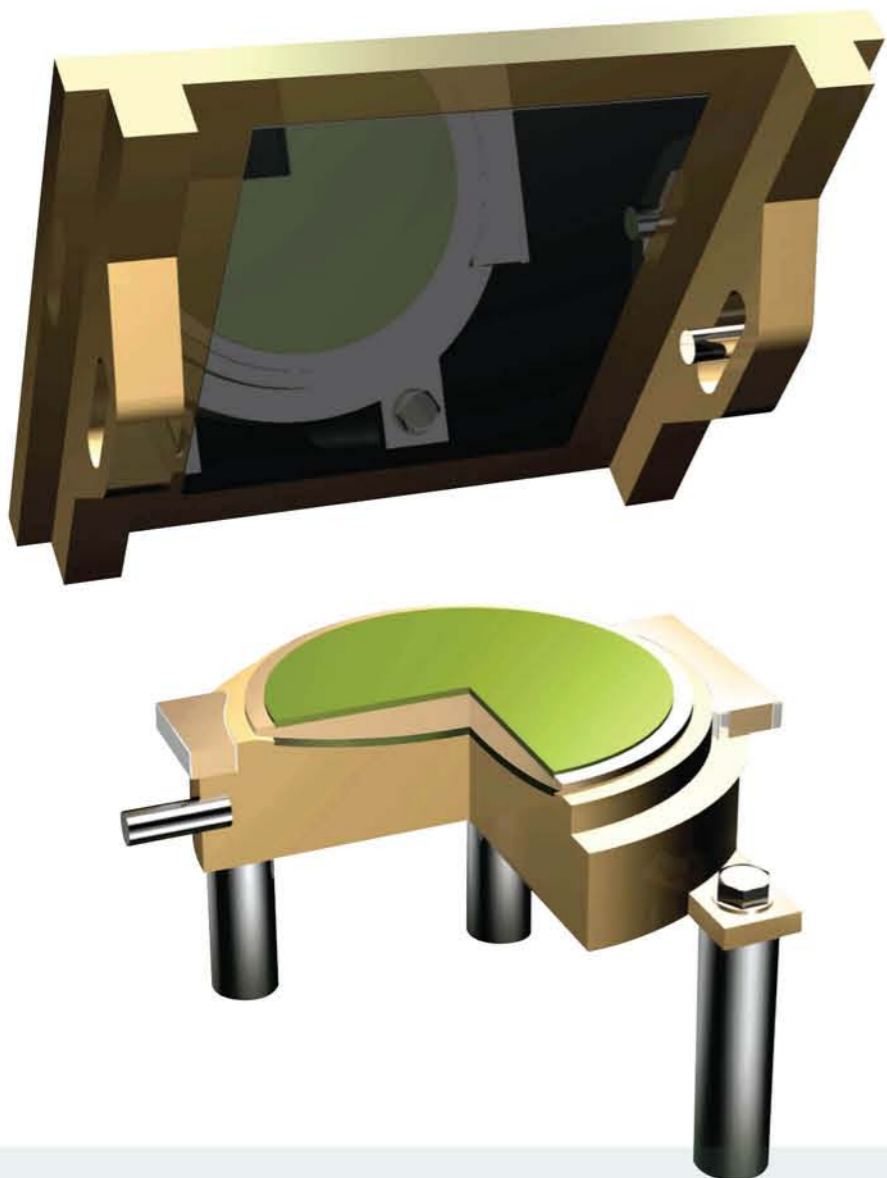


V(kN)	H _{ULS} (kN)	∠SLS	∠ULS	LU	WU	□B	H	LA	WA	∅A	AL
2000	160	± 75	± 150	780	600	330	114	330	330	45	220
3000	210	± 75	± 150	840	660	380	117	370	370	45	220
4000	290	± 75	± 150	880	700	420	122	400	400	45	220
5000	360	± 75	± 150	920	730	480	132	460	460	45	220
6000	430	± 75	± 150	970	790	510	145	490	490	45	220
7000	510	± 75	± 150	1000	820	540	149	520	520	60	280
8000	580	± 75	± 150	1040	860	570	156	550	550	60	280
9000	650	± 75	± 150	1070	880	600	159	580	580	60	280
10000	720	± 75	± 150	1090	910	640	173	610	610	65	300
12000	870	± 75	± 150	1150	960	690	183	660	660	65	300
13000	940	± 75	± 150	1170	990	710	186	680	680	70	320
14000	1020	± 75	± 150	1190	1010	730	189	690	690	75	350
15000	1090	± 75	± 150	1210	1030	760	191	720	720	75	350
16000	1110	± 75	± 150	1250	1060	800	197	760	760	75	350
18000	1210	± 75	± 150	1290	1100	850	206	800	800	80	370
20000	1350	± 75	± 150	1320	1140	900	212	850	850	80	370
22000	1480	± 75	± 150	1360	1170	940	222	890	890	85	400
24000	1620	± 75	± 150	1390	1210	980	227	920	920	85	400
25000	1680	± 75	± 150	1410	1220	1000	234	930	930	85	400
26000	1750	± 75	± 150	1430	1250	1010	239	940	940	85	400
28000	1890	± 75	± 150	1460	1280	1040	243	970	970	85	400
30000	1900	± 75	± 150	1500	1310	1110	244	1030	1030	100	460
35000	2210	± 75	± 150	1570	1380	1180	253	1090	1090	100	460
40000	2530	± 75	± 150	1630	1450	1240	262	1150	1150	105	490
45000	2850	± 75	± 150	1690	1510	1300	271	1210	1210	110	520
50000	3160	± 75	± 150	1830	1650	1420	276	1310	1310	135	630

※ 하부콘크리트 설계기준강도 27MPa 기준임.(단, 28,000kN이상은 35MPa 기준)
 ※ 상기 치수는 표준치수로서 교량특성에 따라 변경될 수 있음.
 ※ Design strength of the lower concrete is 27MPa(For more than 28000kN, 35MPa)
 ※ The dimensions shown on the above are based on the standard specification and subject to change.

New Spherical Bearings

개량분리형 스페리컬 받침



개량 분리형 스페리컬 받침은 상부구조에서 발생하는 하중을 하부구조로 원활하게 전달하고 부반력 저항장치가 핀타입(PIN Type)으로 상부구조와 연결되어 부반력 제어에 탈월한스페리컬형 받침. 또한, 과도한 이동량에 대한 이동제한 장치가 낙교방지 기능을 수행하며, 교축 직각방향 지진 발생시 상부구조의 상향 축방향으로 발생하는 회전력에 의한 부가적인 비틀림응력을 수용할 수 있는 성능이 개선된 스페리컬형 받침.

특징

- Alga S.p.A.사가 개발한 특수 재질의 마찰판(HOT SLIDE)을 사용하여 받침 규격 최적화
- 부반력 저항기를 핀타입(PIN Type)으로 장착하여 안정적임.
- 지진시 상향 축방향으로 회전시 부가적인 응력이 발생되지 않음.
- 고온저항성이 우수하고 내구성이 탁월한 마찰판을사용함으로써 내구연한이 큼.

New Spherical Bearings have been developed spherical bearings for the bridges of the high speed railways but are suitable for all kinds of structures.

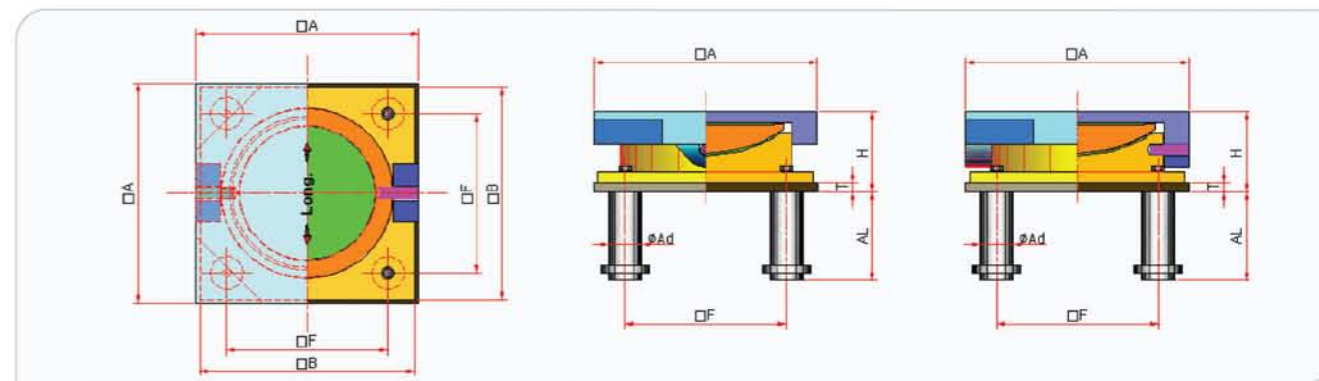
New Spherical Bearings transit loads from the superstructure to the substructure, accommodate movements and big rotations, control the uplift force with PINs connected to upper plates, and allow the additional torsion stress due to rotations occurred in the axial direction of superstructures during seismic events.

Features

- Optimum dimension by utilizing an innovative material (HOT SLIDE) for the sliding
- Resisting uplift force with PINs
- No additional stress when occurringrotations in the axial direction of superstructures during seismic events
- Long life
- High loadbearing capacity

New Spherical Bearings

고정단 Fixed Type

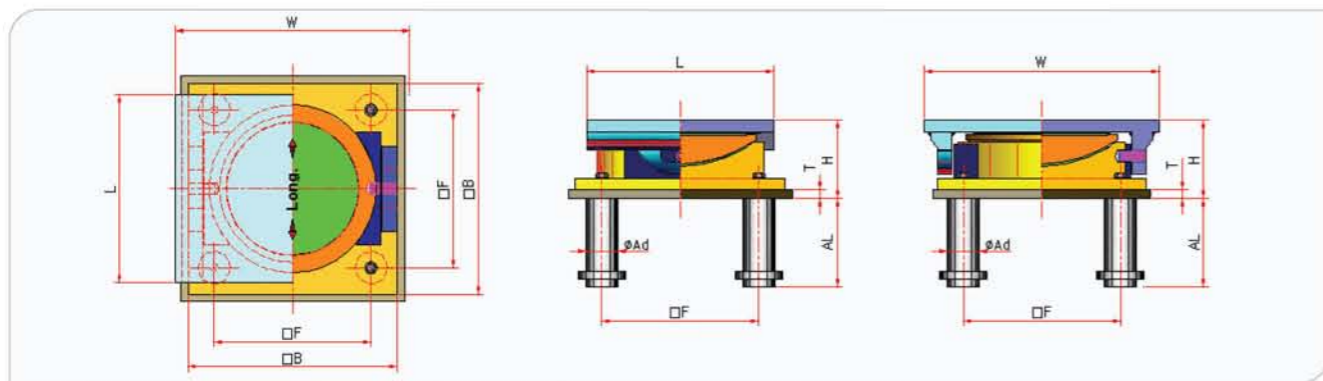


Grade	V(kN)	H(kN)	Uplift(kN)	□A	□B	□F	H	∅Ad	AL
III	1000	300	80	340	300	230	142	30	210
	1500	450	120	370	320	250	147	45	220
	2000	600	160	410	350	270	160	45	250
	2500	750	200	440	370	300	164	60	280
	3000	900	240	470	390	310	182	65	300
	3500	1050	280	510	420	330	207	65	300
	4000	1200	320	530	440	350	212	70	320
	4500	1350	360	555	455	370	216	75	350
	5000	1500	400	600	490	400	232	80	370
	6000	1800	480	670	560	430	248	85	400
	7000	2100	560	730	620	470	263	85	420
8000	2400	640	800	680	520	284	85	480	
9000	2700	720	830	700	550	296	100	480	
10000	3000	800	900	750	580	315	105	490	
IV	1000	400	80	340	300	230	144	40	210
	1500	600	120	370	320	250	149	45	240
	2000	800	160	410	360	280	169	60	280
	2500	1000	200	450	380	300	181	65	300
	3000	1200	240	470	410	320	193	70	320
	3500	1400	280	520	430	340	209	75	350
	4000	1600	320	530	460	360	213	80	370
	4500	1800	360	555	470	370	223	85	400
	5000	2000	400	610	500	400	233	85	410
	6000	2400	480	670	560	430	250	85	465
	7000	2800	560	740	620	490	259	100	475
8000	3200	640	830	700	550	286	135	630	
9000	3600	720	850	720	570	303	135	630	
10000	4000	800	920	750	600	311	135	630	

※ 상기 치수는 표준규격으로서 교량의 제원 및 특성에 따라 변경될 수 있음.
 ※ The dimensions shown on the above are based on the standard specification and subject to change.

New Spherical Bearings

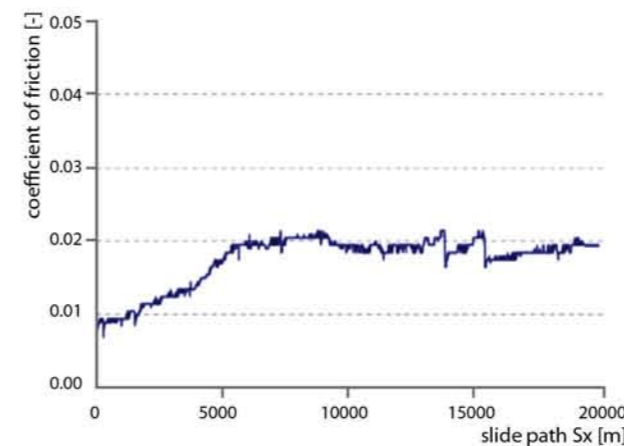
일방향이동단 Guided Type



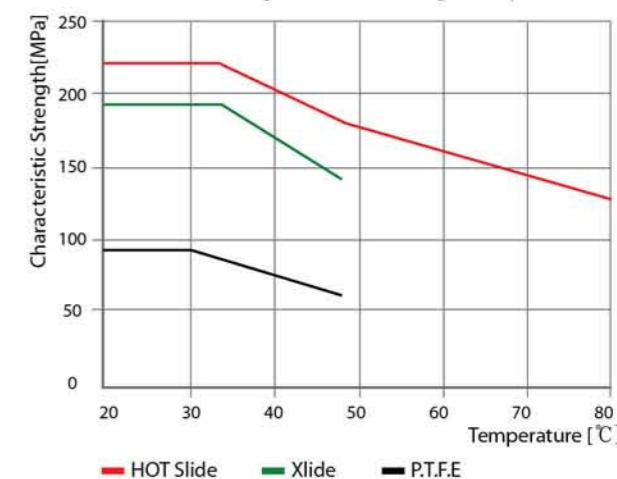
Grade	V(kN)	H(kN)	Uplift(kN)	ΔULS	L	W	DB	DF	H	Ad	AL
III	1000	300	80	± 50	380	360	300	230	148	30	210
	1500	450	120	± 50	410	390	320	250	158	45	220
	2000	600	160	± 50	430	430	350	270	170	45	250
	2500	750	200	± 50	450	470	370	300	179	60	280
	3000	900	240	± 50	470	490	390	310	191	65	300
	3500	1050	280	± 50	490	540	420	330	205	65	300
	4000	1200	320	± 50	510	560	440	350	216	70	320
	4500	1350	360	± 50	525	585	455	370	219	75	350
	5000	1500	400	± 50	550	620	490	400	223	80	370
	6000	1800	480	± 50	580	690	560	430	248	85	400
IV	1000	400	80	± 50	390	370	300	230	149	40	210
	1500	600	120	± 50	420	400	320	250	160	45	240
	2000	800	160	± 50	430	450	360	280	178	60	280
	2500	1000	200	± 50	450	480	380	300	187	65	300
	3000	1200	240	± 50	470	510	410	320	195	70	320
	3500	1400	280	± 50	490	560	430	340	209	75	350
	4000	1600	320	± 50	510	590	460	360	220	80	370
	4500	1800	360	± 50	525	615	470	370	228	85	400
	5000	2000	400	± 50	550	650	500	400	233	85	410
	6000	2400	480	± 50	580	730	540	430	254	85	465
7000	2800	560	± 50	640	790	610	490	264	100	475	
8000	3200	640	± 50	700	860	700	550	283	135	630	
9000	3600	720	± 50	720	900	720	570	305	135	630	
10000	4000	800	± 50	770	960	750	600	312	135	630	

※ 상기 치수는 표준규격으로서 교량의 제원 및 특성에 따라 변경될 수 있음.
 ※ The dimensions shown on the above are based on the standard specification and subject to change.

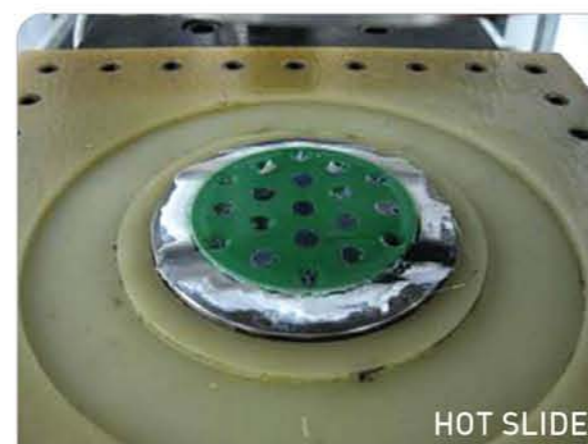
HOT SLIDE



Behaviour of sliding materials at high temperatures



After 20,000M Sliding Test



이태리 Alga S.p.A. 사는 높은 온도에도 안정적이고, 압축강도와 내구성이 탁월한 HOT SLIDE 를 개발하였습니다.

HOT SLIDE 는 유럽위원회의 받침 및 재료 승인 기관인 밀라노 공과대학에서 유럽시방서 EN1337-2에 기준하여 20,000 M 슬라이딩 시험을 완료하며, 최근에는 50,000 M 슬라이딩 시험도 완료하였습니다.

HOT SLIDE 는 원형이나 사각형 등 형태에 관계없이 교량이나 건축물의 받침에 적용될 수 있습니다.

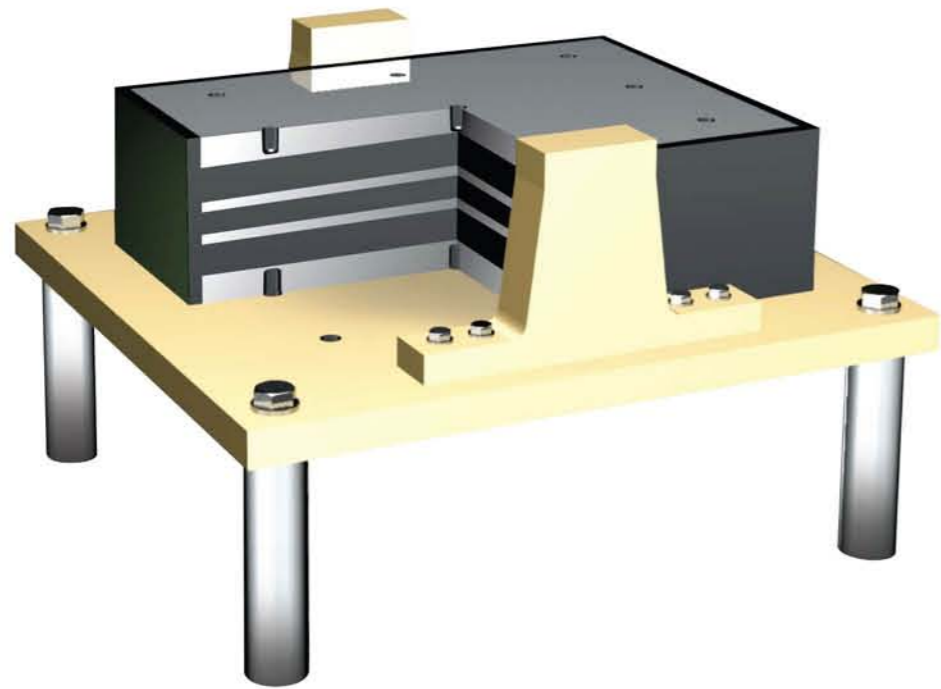
Alga S.p.A. developed an innovative material, Hot Slide, that is high performance special sliding material with very stable coefficient of friction especially designed for high compressive strength, and temperatures and long sliding distances, featuring high stability of the coefficient of friction.

Hot Slide has been tested at the Politecnico of Milano laboratory, notified body at the European Commission for bearings and material approval, using the testing machine designed for the sliding material certification in accordance with the requirement of the code EN1337-2. Several tests has been performed in order to measure the friction as a function of the applied pressure, the velocity and the sliding surface. The successful 20,000 m sliding test already finished, and 50,000m sliding test has been done.

Hot Slides are circular plates, either flat or curved used in the main sliding surfaces or rectangular strips used in guided, which applicable to any type of bearings for bridge and building structure.

EXRB EXtractable Rubber Bearings

탄성받침



고무와 보강철판이 적층으로 구성되어 수직하중에 대해서는 적층고무의 압축강성으로 저항하고, 수평하중 및 온도등에 의한 신축,팽창은 대해서는 적층고무의 전단변형으로 저항함

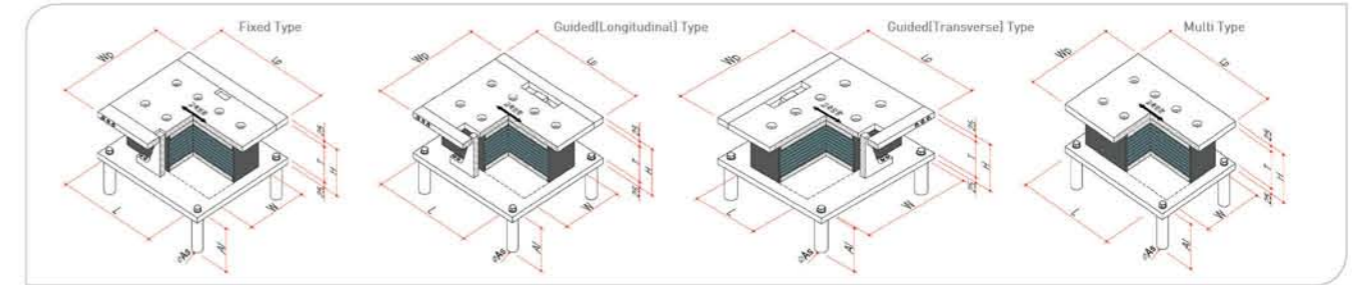
특징

- 이동제한 장치가 하부 Bolt 형식으로 부착
- 상판과 연결 판 사이의 홈에서 변위 수용.
- 유지보수 유리

EXRBs(EXtractable Rubber Bearings) are comprised of a block of elastomer that reinforced with steel plates and accommodates both translational and rotational movements due to lateral loads and temperature effects through the deformation of the elastomer.

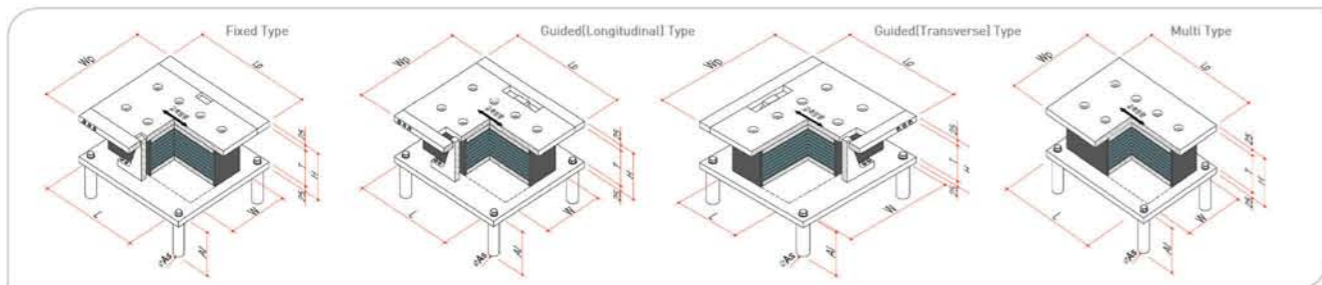
Features

- Movement limiting devices bolted to lower plates
- Load distribution onto several piers and foundations
- Balancing the movements to both bridge ends
- Easy installation
- Easy maintenance



V (kN)	Elastomer				Elastomer Layer		Δ(mm)		G=0.09MPa				G=1.15MPa				Steel Plate				Anchor (mm)			
	W	L	T	H	No.	Teff	SLS	ULS	SLS	ULS	Kv (kN/m)	Kh (kN/m)	SLS	ULS	Kv (kN/m)	Kh (kN/m)	Fixed		Guided		Multi		As	Al
																	Wp	Lp	Wp	Lp	Wp	Lp		
450	200	250	71	121	4	32	22	48	32	68	212,900	1,407	40	86	265,900	1,797	360	350	360	350	300	350	35	120
			82	132	5	40	28	60			170,300	1,125			212,700	1,438								
			93	143	6	48	34	72			141,900	938			177,300	1,198								
550	200	300	71	121	4	32	22	48	38	81	300,700	1,688	48	104	374,300	2,157	360	400	360	400	300	400	35	120
			82	132	5	40	28	60			240,600	1,350			299,400	1,725								
			93	143	6	48	34	72			200,500	1,125			249,500	1,438								
650	200	350	71	121	4	32	22	48	44	95	395,500	1,969	56	121	490,900	2,516	360	450	360	450	300	450	35	120
			82	132	5	40	28	60			316,400	1,575			392,700	2,013								
			93	143	6	48	34	72			263,700	1,313			327,300	1,678								
700	250	300	71	121	4	32	22	48	47	101	494,800	2,110	60	129	611,400	2,696	410	400	410	400	350	400	40	120
			82	132	5	40	28	60			395,800	1,688			489,100	2,157								
			93	143	6	48	34	72			329,900	1,407			407,600	1,797								
750	200	400	71	121	4	32	22	48	50	108	495,600	2,250	64	138	613,500	2,875	360	500	360	500	300	500	40	120
			82	132	5	40	28	60			396,500	1,800			490,800	2,300								
			93	143	6	48	34	72			330,400	1,500			409,000	1,917								
1000	250	400	71	121	4	32	22	48	63	135	835,000	2,813	81	173	1,023,500	3,594	410	500	410	500	350	500	40	120
			82	132	5	40	28	60			668,000	2,250			818,800	2,875								
			93	143	6	48	34	72			556,700	1,875			682,300	2,396								
1350	300	400	84	134	3	36	25	54	76	162	477,200	1,608	97	207	584,900	2,054	510	500	510	500	400	500	40	150
			100	150	4	48	34	72			544,800	3,000			678,800	3,834								
			116	166	5	60	42	90			408,600	2,250			509,100	2,875								
1750	300	500	132	182	6	72	50	108	95	203	326,900	1,800	121	259	407,300	2,300	510	600	510	600	410	610	50	150
			148	198	7	84	59	126			272,400	1,500			339,400	1,917								
			164	214	8	96	67	144			233,500	1,286			290,900	1,643								
1900	350	450	164	214	8	96	67	144	99	213	204,300	1,125	127	272	254,600	1,438	560	550	560	550	460	560	50	150
			180	230	9	108	76	162			181,600	1,000			226,300	1,278								
			196	246	10	120	84	180			163,500	900			203,700	1,150								
2000	300	600	84	134	3	36	25	54	113	243	812,900	3,750	145	311	1,008,200	4,792	510	700	510	700	430	730	55	150
			100	150	4	48	34	72			609,700	2,813			756,200	3,594								
			116	166	5	60	42	90			487,800	2,250			604,900	2,875								
2250	400	500	132	182	6	72	50	108	126	270	406,500	1,875	161	345	504,100	2,396	620	600	620	600	530	630	55	150
			148	198	7	84	59	126			348,400	1,608			432,100	2,054								
			164	214	8	96	67	144			304,900	1,407			378,100	1,797								

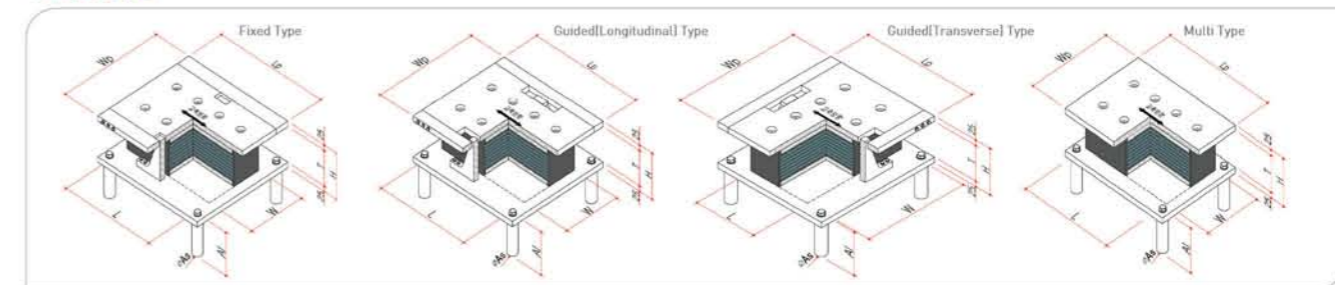
※ 상기 치수는 표준규격으로서 교량의 제원 및 특성에 따라 변경될 수 있음.
 ※ The dimensions shown on the above are based on the standard specification and subject to change.



V (kN)	Elastomer				Elastomer Layer		Δ(mm)		G=0.09MPa				G=1.15MPa				Steel Plate						Anchor (mm)	
	W	L	T	H	No.	Teff	SLS	ULS	H(kN)		Kv		Kh		Fixed		Guided		Multi		As	Al		
									SLS	ULS	(kN/m)	(kN/m)	SLS	ULS	(kN/m)	(kN/m)	Wp	Lp	Wp	Lp			Wp	Lp
2800	400	600	100	150	4	48	34	72	151	324	1,568,000	4,500	193	414	1,912,800	5,750	620	700	620	700	560	760	70	150
			116	166	5	60	42	90			1,254,400	3,600			1,530,300	4,600								
			132	182	6	72	50	108			1,045,400	3,000			1,275,200	3,834								
			148	198	7	84	59	126			784,000	2,250			956,400	2,875								
			164	214	8	96	67	144			696,900	2,000			850,200	2,556								
			180	230	9	108	76	162			627,200	1,800			765,200	2,300								
3000	450	600	100	150	4	48	34	72	170	365	1,999,000	5,063	217	466	2,424,800	6,469	680	700	680	700	610	760	70	150
			116	166	5	60	42	90			1,599,200	4,050			1,939,800	5,175								
			132	182	6	72	50	108			1,332,700	3,375			1,616,500	4,313								
			148	198	7	84	59	126			1,142,300	2,893			1,385,600	3,697								
			164	214	8	96	67	144			999,500	2,532			1,212,400	3,235								
			180	230	9	108	76	162			888,500	2,250			1,077,700	2,875								
3500	500	600	100	150	4	48	34	72	189	405	2,462,300	5,625	242	518	2,971,000	7,188	730	700	730	700	660	760	70	150
			116	166	5	60	42	90			1,969,800	4,500			2,376,800	5,750								
			132	182	6	72	50	108			1,641,500	3,750			1,980,700	4,792								
			148	198	7	84	59	126			1,407,000	3,215			1,697,800	4,108								
			164	214	8	96	67	144			1,231,200	2,813			1,485,500	3,594								
			180	230	9	108	76	162			1,094,400	2,500			1,320,500	3,195								
4300	600	600	119	169	4	64	45	96	227	486	1,639,700	5,063	290	621	2,008,100	6,469	890	700	890	700	760	760	70	170
			140	190	5	80	56	120			1,311,700	4,050			1,606,500	5,175								
			161	211	6	96	67	144			1,093,100	3,375			1,338,800	4,313								
			182	232	7	112	78	168			937,000	2,893			1,147,500	3,697								
			203	253	8	128	90	192			819,900	2,532			1,004,100	3,235								
			224	274	9	144	101	216			728,800	2,250			892,500	2,875								
5000	600	700	119	169	4	64	45	96	265	567	2,183,400	5,907	338	725	2,659,000	7,547	890	800	890	800	760	860	70	170
			140	190	5	80	56	120			1,746,700	4,725			2,127,200	6,038								
			161	211	6	96	67	144			1,455,600	3,938			1,772,700	5,032								
			182	232	7	112	78	168			1,247,700	3,375			1,519,500	4,313								
			203	253	8	128	90	192			1,091,700	2,954			1,329,500	3,774								
			224	274	9	144	101	216			970,400	2,625			1,181,800	3,355								
6000	700	700	119	169	4	64	45	96	309	662	2,927,000	6,891	394	845	3,540,800	8,805	990	900	990	900	900	900	70	170
			140	190	5	80	56	120			2,341,600	5,513			2,832,600	7,044								
			161	211	6	96	67	144			1,961,300	4,594			2,360,500	5,870								
			182	232	7	112	78	168			1,672,600	3,938			2,023,300	5,032								
			203	253	8	128	90	192			1,463,500	3,446			1,770,400	4,403								
			224	274	9	144	101	216			1,300,900	3,063			1,573,700	3,914								
7000	700	800	119	169	4	64	45	96	353	756	3,726,100	7,875	451	966	4,481,300	10,063	990	1000	990	1000	900	1000	70	170
			140	190	5	80	56	120			2,980,900	6,300			3,585,100	8,050								
			161	211	6	96	67	144			2,484,100	5,250			2,987,600	6,709								
			182	232	7	112	78	168			2,129,200	4,500			2,560,800	5,750								
			203	253	8	128	90	192			1,863,100	3,938			2,240,700	5,032								
			224	274	9	144	101	216			1,656,100	3,500			1,991,700	4,473								
8000	800	800	135	185	4	80	56	120	403	864	2,680,100	7,200	515	1,104	3,264,800	9,200	1130	1000	1130	1000	1000	1000	70	230
			160	210	5	100	70	150			2,144,100	5,760			2,611,800	7,360								
			185	235	6	120	84	180			1,786,700	4,800			2,176,500	6,134								
			210	260	7	140	98	210			1,531,500	4,115			1,865,600	5,258								
			235	285	8	160	112	240			1,340,100	3,600			1,632,400	4,600								
			260	310	9	180	126	270			1,191,200	3,200			1,451,000	4,089								
10000	900	900	135	185	4	80	56	120	510	1,094	4,142,900	9,113	652	1,397	4,996,700	11,644	1250	1100	1250	1100	1100	1100	70	230
			160	210	5	100	70	150			3,314,300	7,290			3,997,400	9,315								
			185	235	6	120	84	180			2,762,000	6,075			3,331,200	7,763								
			210	260	7	140	98	210			2,367,400	5,208			2,855,300	6,654								
			235	285	8	160	112	240			2,071,500	4,557			2,498,400	5,822								
			260	310	9	180	126	270			1,841,300	4,050			2,220,800	5,175								

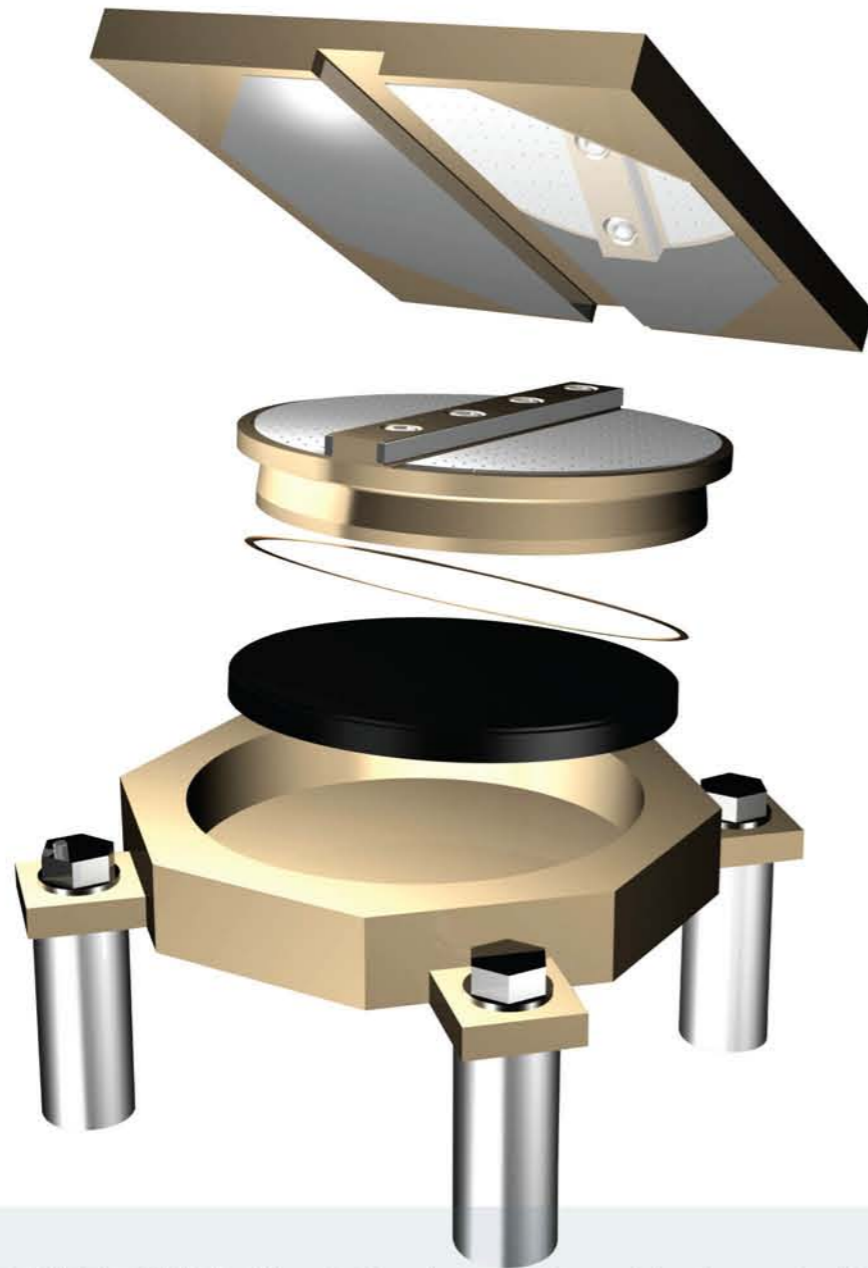
* 상기 치수는 표준규격으로서 교량의 제한 및 특성에 따라 변경될 수 있음.
 * The dimensions shown on the above are based on the standard specification and subject to change.

AASHTO



V (kN)	Elastomer				Elastomer Layer		Δ(mm)		G=1.08MPa				Steel Plate						Anchor (mm)			
	W	L	T	H	No.	Teff	SLS	ULS	H(kN)		Kv		Kh		Fixed		Guided		Multi		As	Al
									SLS	ULS	(kN/m)	(kN/m)	Wp	Lp	Wp	Lp	Wp	Lp				
500	210	300	104	154	7	56	28	84	34.0	102.0	340,600	1,214	460	400	460	400	310	400	35	120		
			115	165	8	64	32	96			298,000	1,059										
			126	176	9	72	36	108			264,900	941										
			137	187	10	80	40	120			238,400	843										
			148	198	11	88	44	132			216,700	765										
			159	209	12	96	48	144			198,700	706										
750	220	400	104	154	7	56	28	84	47.5	142.4	650,500	1,687	470	500	470	500	320	500	40	120		
			115	165	8	64	32	96			569,200	1,481										
			126	176	9	72	36	108			505,900	1,314										
			137	187	10	80	40	120			455,300	1,187										
			148	198	11	88	44	132			413,900	1,079										
			159	209	12	96	48	144			379,400	981										
1000	290	400	100	150	4	48	24	72	62.6	187.7	663,200	2,599	540	500	540	500	410	520	40	120		
			116	166	5	60	30	90			530,600	2,079										
			132	182	6	72	36	108			442,100	1,736										
			148	198	7	84	42	126			379,000	1,481										
			164	214	8	96	48	144			331,600	1,294										
			180	230	9	108	54	162			294,700	1,157										
1350	330	450	100	150	4	48	24	72	80.1	240.3	1,119,400	3,334	580	550	580	550	450	570	40	150		
			116	166	5	60	30	90			895,600	2,667										
			132	182	6	72	36	108			746,300	2,216										
			148	198	7	84	42	126			639,700	1,902										
			164	214	8	96	48	144			559,700	1,667										
			180	230	9	108	54	162			497,500	1,481										
1750	350	550	116	166	5	60	30	90	103.8	311.5	1,495,200	3,452	640	650	640	650	480	680	50	150		
			132	182	6	72	36	108			1,246,000	2,883										
			148	198	7	84	42	126			1,068,000	2,471										
			164	214	8	96	48	144			934,500	2,157										
			180	230	9	108	54	162			830,600	1,922										
			196	246	10	120	60	180			747,600	1,726										
2000	400	550	116	166	5	60	30	90	118.7	356.0	1,495,200	3,452	690	650	690	650	530	680	55	150		
			132	182	6	72	36	108			1,246,000	2,883										
			148	198	7	84	42	126			1,068,000	2,471										

Pot Bearings



Pot Bearing은 원형의 밀폐용기에 고무를 넣고 그 위에 피스톤을 얹어 고무의 탄성변형에 의해 회전을 얻고, 피스톤위에 불소수지(PTFE)판을 붙이고 윤활유를 주입하여 마찰계수를 감소시켜 수평방향의 변위를 얻게 하는 것으로서 제품의 용기속에 고무가 유체처럼 작용하여 수직반력을 골고루 분포시키고, 타 받침에 비해 높이 또한 낮아 회전에 대한 안전성이 크며 회전에 따른 하중의 편심이 작아서 유리하다.

특징

- 받침 높이가 낮아 회전에 대해 안정적
- 반력이 커질수록 다른 받침보다 경제성이 증가

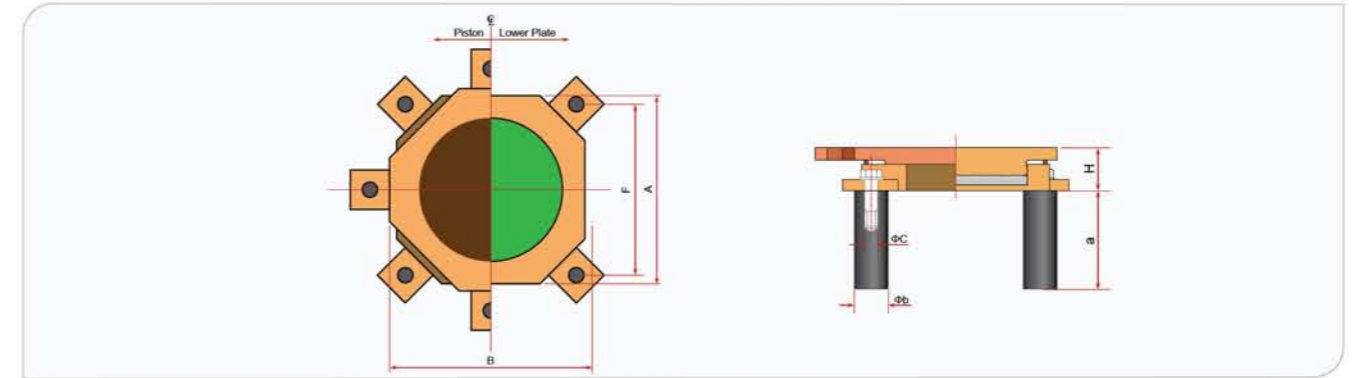
Pot Bearings comprise a plain elastomeric disk that is confined in a pot and behaves like a viscous fluid within the pot as the bearing rotates. Flat sealing rings are used to contain the elastomer inside the pot. Vertical loads are transmitted through a steel piston that fits closely to the pot wall and lateral loads are transmitted through the steel piston moving against the pot wall. To accommodate translational movements, a PTFE sliding plates used Pot bearings are stable and economic devices due to optimum dimension.

Features

- Stability for rotation due to low height
- Economical devices as loads increasing

Pot Bearings

고정단 Fixed Type



V(kN)	HsLs(kN)	Hsus(kN)	A	F	H	Φc	Φb	a
2000	200	260	320	270	69	16	40	150
	400	520	340	290	79	22	50	160
	600	780	370	330	85	27	70	170
	800	1040	390	350	91	33	80	200
	1000	1300	400	365	96	36	90	220
2500	250	325	360	305	73	18	50	150
	500	650	390	340	85	27	70	150
	750	975	410	355	90	30	70	210
	1000	1300	440	390	99	36	90	220
	1250	1625	460	405	106	39	90	280
3000	300	390	380	320	78	20	50	150
	600	780	410	355	92	27	70	170
	900	1170	440	385	98	33	80	220
	1200	1560	470	415	108	39	90	270
	1500	1950	490	440	117	45	110	270
3500	350	455	430	355	83	22	50	150
	700	910	450	385	94	30	70	200
	1050	1365	490	425	103	36	90	230
	1400	1820	510	450	113	42	100	280
	1750	2275	540	475	123	48	110	320
4000	400	520	450	370	89	22	50	160
	800	1040	480	415	110	33	80	200
	1200	1560	500	435	120	39	90	270
	1600	2080	510	455	134	45	110	290
	2000	2600	530	475	146	52	120	330
4500	450	585	480	400	104	24	60	150
	900	1170	500	425	116	33	80	220
	1350	1755	530	460	133	42	100	270
	1800	2340	550	485	142	48	110	320
	2250	2925	560	495	154	52	120	370
5000	500	650	510	425	106	27	70	150
	1000	1300	550	470	120	36	90	220
	1500	1950	580	505	133	45	110	270
	2000	2600	580	510	146	52	120	330
	2500	3250	580	520	164	56	130	380

※ 상기 치수는 표준치수로서 교량특성에 따라 변경될 수 있음.
 ※The dimensions shown on the above are based on the standard specification and subject to change.

Pot Bearings

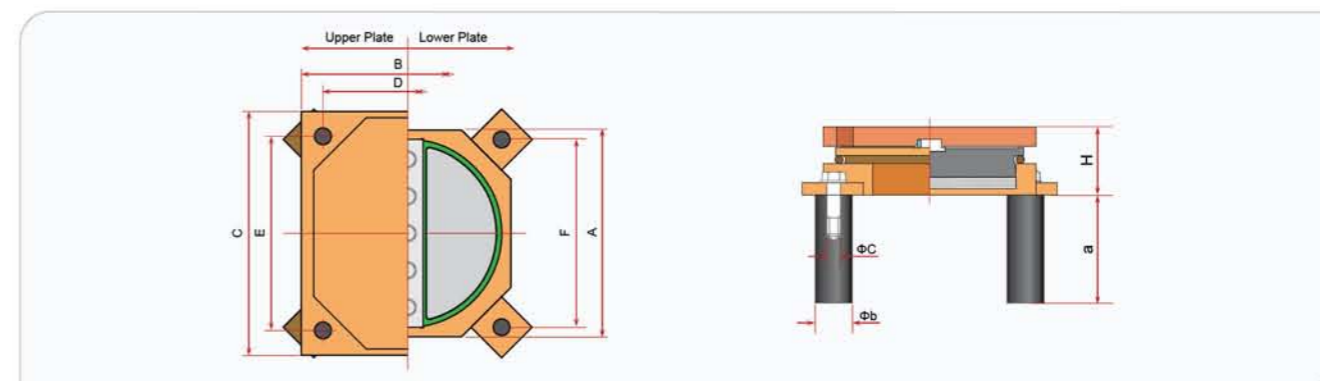
고정단 Fixed Type

V(kN)	H _{SLS} (kN)	H _{SUS} (kN)	A	F	H	Φ _c	Φ _b	a
5500	550	715	540	450	108	27	70	160
	1100	1430	570	485	124	39	90	240
	1650	2145	590	510	141	45	110	300
	2200	2860	610	535	151	52	120	360
	2750	3575	610	545	169	60	140	390
6000	600	780	560	460	113	27	70	170
	1200	1560	610	510	127	39	90	270
	1800	2340	610	525	145	48	110	320
	2400	3120	640	560	155	56	130	370
	3000	3900	660	580	171	60	140	420
6500	650	845	600	490	118	30	70	190
	1300	1690	630	535	132	42	100	260
	1950	2535	660	560	146	48	110	350
	2600	3380	660	575	164	56	130	400
	3250	4225	690	610	177	64	150	430
7000	700	910	620	505	117	30	70	200
	1400	1820	650	545	138	42	100	280
	2100	2730	670	575	154	52	120	350
	2800	3640	690	605	172	60	140	400
	3500	4550	710	625	186	64	150	460
7500	750	975	660	535	116	30	70	210
	1500	1950	690	580	139	45	110	270
	2250	2925	700	595	160	52	120	370
	3000	3900	730	630	170	60	140	420
	3750	4875	730	645	190	68	160	460
8000	800	1040	670	545	125	33	80	200
	1600	2080	700	590	142	45	110	290
	2400	3120	730	625	160	56	130	370
	3200	4160	740	645	183	64	150	420
	4000	5200	750	660	197	68	160	490
8500	850	1105	700	570	123	33	80	210
	1700	2210	730	610	145	45	110	310
	2550	3315	750	640	166	56	130	390
	3400	4420	760	660	187	64	150	450
	4250	5525	770	675	204	68	160	520
9000	900	1170	720	580	126	33	80	220
	1800	2340	760	630	149	48	110	320
	2700	3510	780	665	169	60	140	380
	3600	4680	790	690	190	68	160	440
	4500	5850	800	695	208	68	160	550
9500	950	1235	760	620	132	36	90	210
	1900	2470	780	645	150	48	110	340
	2850	3705	800	680	175	60	140	400
	3800	4940	830	715	197	68	160	470
	4750	6175	820	710	214	68	160	590
10000	1000	1300	780	630	140	36	90	220
	2000	2600	810	675	158	52	120	330
	3000	3900	820	695	178	60	140	420
	4000	5200	840	725	203	68	160	490
	5000	6500	850	730	224	68	160	620
11000	1100	1430	820	660	139	39	90	240
12000	1200	1560	850	680	150	39	90	270
13000	1300	1690	900	725	148	42	100	260
14000	1400	1820	930	745	153	42	100	280
15000	1500	1950	990	795	158	45	110	270
16000	1600	2080	1000	800	167	45	110	290
17000	1700	2210	1030	825	170	45	110	310
18000	1800	2340	1100	870	176	48	110	320
19000	1900	2470	1110	880	178	48	110	340
20000	2000	2600	1160	920	183	52	120	330
22000	2200	2860	1210	955	189	52	120	360
24000	2400	3120	1270	1005	205	56	130	370
26000	2600	3380	1320	1040	212	56	130	400
28000	2800	3640	1380	1090	219	60	140	400
30000	3000	3900	1440	1135	225	60	140	420

※ 상기 치수는 표준치수로서 교량특성에 따라 변경될 수 있음.
 ※The dimensions shown on the above are based on the standard specification and subject to change.

Pot Bearings

일방향가동단 Guided Type



V(kN)	H _{SLS} (kN)	H _{SUS} (kN)	A	F	B	C	D	E	H	Φ _c	Φ _b	a
2000	200	260	310	265	310	410	250	350	106	16	40	150
	400	520	340	290	340	440	270	370	114	22	50	160
	600	780	390	340	390	490	300	400	129	27	70	170
	800	1040	410	365	410	510	310	410	153	33	80	200
	1000	1300	440	390	440	540	330	430	168	36	90	220
2500	250	325	360	305	360	460	300	400	102	18	50	150
	500	650	390	340	390	490	300	400	125	27	70	150
	750	975	410	355	410	510	320	420	143	30	70	210
	1000	1300	450	400	450	550	340	440	166	36	90	220
	1250	1625	490	425	490	590	370	470	182	39	90	280
3000	300	390	380	320	380	480	320	420	105	20	50	150
	600	780	430	370	430	530	340	440	130	27	70	170
	900	1170	440	385	440	540	340	440	159	33	80	220
	1200	1560	500	435	500	600	380	480	177	39	90	270
	1500	1950	530	470	530	630	390	490	199	45	110	270
3500	350	455	430	355	430	530	360	460	108	22	50	150
	700	910	450	385	450	550	360	460	137	30	70	200
	1050	1365	480	420	480	580	370	470	172	36	90	230
	1400	1820	530	460	530	630	400	500	192	42	100	280
	1750	2275	570	495	570	670	420	520	209	48	110	320
4000	400	520	460	375	460	560	390	490	112	22	50	160
	800	1040	490	420	490	590	390	490	136	33	80	200
	1200	1560	490	425	490	590	370	470	182	39	90	270
	1600	2080	540	475	540	640	400	500	206	45	110	290
	2000	2600	590	520	590	690	430	530	227	52	120	330
4500	450	585	480	400	480	580	400	500	117	24	60	150
	900	1170	490	420	490	590	390	490	159	33	80	220
	1350	1755	530	460	530	630	400	500	184	42	100	270
	1800	2340	590	510	590	690	440	540	216	48	110	320
	2250	2925	660	570	660	760	500	600	239	52	120	370
5000	500	650	510	425	510	610	420	520	127	27	70	150
	1000	1300	530	455	530	630	420	520	162	36	90	220
	1500	1950	560	490	560	660	420	520	193	45	110	270
	2000	2600	620	540	620	720	460	560	225	52	120	330
	2500	3250	680	59	680	780	510	610	251	56	130	380

※ 상기 치수는 표준치수로서 교량특성에 따라 변경될 수 있음.
 ※The dimensions shown on the above are based on the standard specification and subject to change.

Pot Bearings

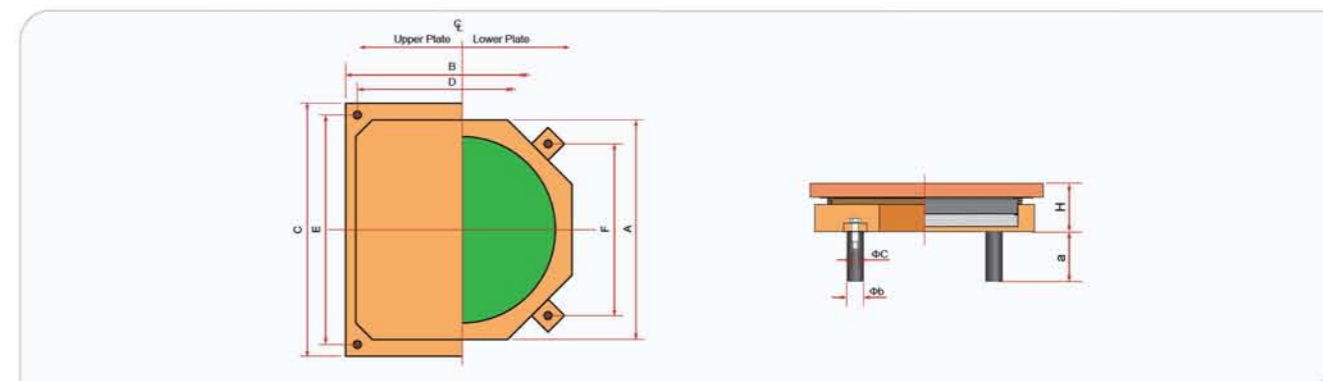
일방향가동단 Guided Type

V(kN)	H _{SLS} (kN)	H _{SUS} (kN)	A	F	B	C	D	E	H	Φ _c	Φ _b	a
5500	550	715	550	455	540	650	460	560	129	27	70	160
	1100	1430	560	475	570	660	440	540	157	39	90	240
	1650	2145	610	525	590	710	470	570	200	45	110	300
	2200	2860	640	555	610	740	480	580	234	52	120	360
	2750	3575	710	620	610	810	530	630	264	60	140	390
6000	600	780	580	475	560	680	490	590	133	27	70	170
	1200	1560	590	495	610	690	470	570	163	39	90	270
	1800	2340	610	525	610	710	460	560	218	48	110	320
	2400	3120	680	590	640	780	510	610	245	56	130	370
	3000	3900	750	645	660	850	570	670	276	60	140	420
6500	650	845	600	490	600	700	510	610	139	30	70	190
	1300	1690	610	520	630	710	480	580	172	42	100	260
	1950	2535	640	545	660	740	490	590	214	48	110	350
	2600	3380	700	605	660	800	530	630	253	56	130	400
	3250	4225	770	665	690	870	570	670	290	64	150	430
7000	700	910	630	510	620	730	540	640	141	30	70	200
	1400	1820	650	545	650	750	520	620	170	42	100	280
	2100	2730	690	590	670	790	530	630	222	52	120	350
	2800	3640	750	645	690	850	570	670	262	60	140	400
	3500	4550	820	705	710	920	620	720	293	64	150	460
7500	750	975	660	535	660	760	570	670	145	30	70	210
	1500	1950	670	570	690	770	530	630	183	45	110	270
	2250	2925	680	580	700	780	520	620	238	52	120	370
	3000	3900	760	655	730	860	580	680	270	60	140	420
	3750	4875	830	715	730	930	620	720	307	68	160	460
8000	800	1040	680	555	670	780	580	680	147	33	80	200
	1600	2080	700	590	700	800	560	660	179	45	110	290
	2400	3120	730	625	730	830	560	660	231	56	130	370
	3200	4160	780	675	740	880	580	680	281	64	150	420
	4000	5200	850	730	750	950	640	740	321	68	160	490
8500	850	1105	710	575	700	810	610	710	152	33	80	210
	1700	2210	730	610	730	830	590	690	184	45	110	310
	2550	3315	750	640	750	850	580	680	246	56	130	390
	3400	4420	860	730	760	960	660	760	278	64	150	450
	4250	5525	900	765	770	1000	690	790	324	68	160	520
9000	900	1170	730	590	720	830	630	730	155	33	80	220
	1800	2340	750	625	760	850	600	700	189	48	110	320
	2700	3510	780	665	780	880	600	700	251	60	140	380
	3600	4680	820	710	790	920	610	710	296	68	160	440
	4500	5850	900	765	800	1000	690	790	334	68	160	550
9500	950	1235	760	620	760	860	650	750	159	36	90	210
	1900	2470	790	655	780	890	640	740	193	48	110	340
	2850	3705	780	665	800	880	600	700	261	60	140	400
	3800	4940	850	730	830	950	640	740	303	68	160	470
	4750	6175	930	785	820	1030	720	820	342	68	160	590
10000	1000	1300	790	640	780	890	680	780	168	36	90	220
	2000	2600	830	690	810	930	670	770	195	52	120	330
	3000	3900	830	705	820	930	650	750	256	60	140	420
	4000	5200	870	745	840	970	660	760	313	68	160	490
	5000	6500	970	815	850	1070	760	860	352	68	160	620
11000	1100	1430	820	660	820	920	700	800	167	39	90	240
12000	1200	1560	870	695	850	970	750	850	179	39	90	270
13000	1300	1690	900	725	900	1000	770	870	183	42	100	260
14000	1400	1820	940	750	930	1040	810	910	189	42	100	280
15000	1500	1950	1000	800	990	1100	860	960	197	45	110	270
16000	1600	2080	1010	810	1000	1110	870	970	201	45	110	290
17000	1700	2210	1040	830	1030	1140	900	1000	207	45	110	310
18000	1800	2340	1110	880	1100	1210	960	1060	213	48	110	320
19000	1900	2470	1100	870	1110	1200	950	1050	226	48	110	340
20000	2000	2600	1170	930	1160	1270	1010	1110	227	52	120	330
22000	2200	2860	1220	965	1210	1320	1060	1160	233	52	120	360
24000	2400	3120	1270	1005	1270	1370	1100	1200	254	56	130	370
26000	2600	3380	1320	1040	1320	1420	1150	1250	263	56	130	400
28000	2800	3640	1380	1090	1380	1480	1200	1300	271	60	140	400
30000	3000	3900	1440	1135	1440	1540	1260	1360	280	60	140	420

※ 상기 치수는 표준치수로서 교량특성에 따라 변경될 수 있음.
 ※The dimensions shown on the above are based on the standard specification and subject to change.

Pot Bearings

양방향가동단 Multi Type

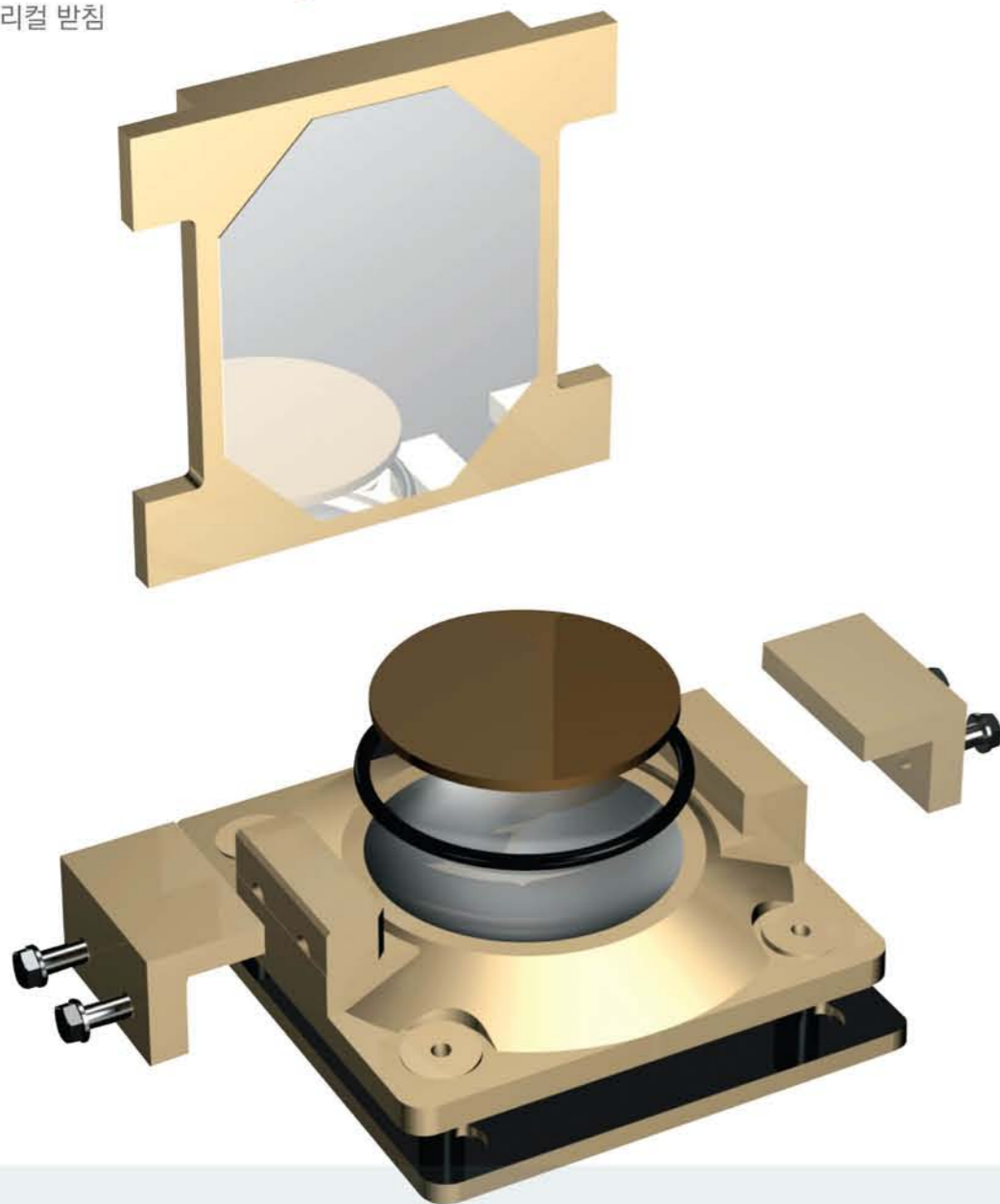


V(kN)	A	F	B	C	D	E	H	Φ _c	Φ _b	a
2000	360	300	400	460	340	400	96	12	40	150
2500	380	320	420	480	360	420	98	14	40	150
3000	430	370	470	530	410	470	105	14	40	150
3500	440	380	480	540	420	480	104	16	40	150
4000	460	400	500	560	440	500	116	16	40	150
4500	490	430	530	590	470	530	108	18	50	150
5000	520	460	560	620	500	560	112	18	50	150
5500	540	480	580	640	520	580	119	20	50	150
6000	560	500	600	660	540	600	129	20	50	150
6500	580	520	620	680	560	620	132	20	50	150
7000	610	540	650	710	580	640	139	22	50	150
7500	660	590	700	760	630	690	145	22	50	150
8000	670	600	710	770	640	700	145	22	50	150
8500	690	610	730	790	650	710	147	24	60	150
9000	730	650	770	830	690	750	151	24	60	150
9500	740	650	780	840	690	750	153	27	70	150
10000	760	670	800	860	710	770	157	27	70	150
11000	820	730	860	920	770	830	162	27	70	150
12000	860	770	900	960	810	870	169	27	70	160
13000	90	810	940	1000	850	910	171	30	70	170
14000	980	890	1020	1080	930	990	178	30	70	190
15000	100	900	1040	1100	940	1000	179	33	80	170
16000	1020	920	1060	1120	960	1020	179	33	80	190
17000	1110	1010	1150	1210	1050	1110	191	33	80	200
18000	1100	1000	1140	1200	1040	1100	192	33	80	210
19000	1160	1050	1200	1260	1090	1150	202	36	90	200
20000	1190	1080	1230	1290	1120	1180	204	36	90	210
22000	1270	1150	1310	1370	1190	1250	219	39	90	230
24000	1330	1210	1370	1430	1250	1310	228	39	90	250
26000	1380	1250	1420	1480	1290	1350	232	42	100	240
28000	1440	1310	1480	1540	1350	1410	242	42	100	260
30000	1490	1350	1530	1590	1390	1450	248	45	110	250

※ 상기 치수는 표준치수로서 교량특성에 따라 변경될 수 있음.
 ※The dimensions shown on the above are based on the standard specification and subject to change.

Spherical Bearings

분리형 스페리컬 받침



분리형 스페리컬 받침 상부구조에서 발생하는 하중을 하부구조로 원활하게 전달하고, 과도한 변위량을 제한하며 낙교를 방지기능을 수행할수 있다

특징

- 회전이 큰 곳, 회전방향이 이동방향과 일치하지 않는 곳에 유리
- 우수한 내구연한
- 하부구조의 파손 없이 교체 및 유지보수가능

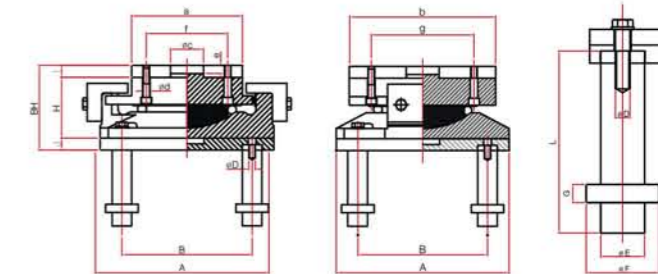
Spherical Bearings transmit loads from the superstructure to the substructure, accommodate movements and big rotations, and control the uplift force with limiting devices.

Features

- Allow big rotations
- Suitable installation especially not in the same directions of rotation and movement
- Long life
- Easy replacement and maintenance without breaking lower structure

Spherical Bearings Grade I

분리형 스페리컬 받침 1등급

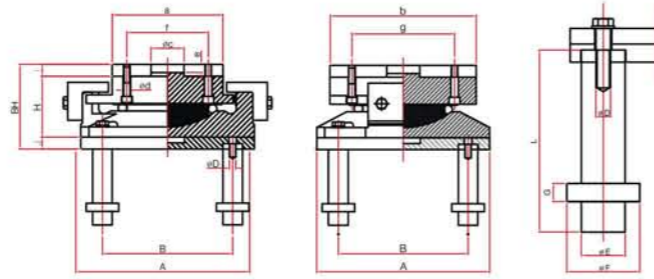


V (kN)	Type	H _{SLS} (kN)	H _{SUS} (kN)		Uplift (kN)	Dimension													Anchor Socket					
			Long	Trans		A	B	a	b	φ _c	φ _D	φ _d	e	f	g	H	I	J	BH	φ _E	φ _F	G	L	Q'ty
500	I.DCF0	80	384	312	40	340	250	160	330	60	20	12	16	110	280	120	22	25	167	40	60	20	150	4
	I.DCF1		384	312																				
	I.DCM1		-	-																				
750	DCM2	120	576	468	60	360	260	160	370	80	20	16	18	110	320	130	22	25	177	50	70	20	150	4
	I.DCF0		576	468																				
	I.DCF1		-	-																				
1000	DCM2	150	768	624	80	420	310	190	420	90	24	16	21	140	370	150	22	25	197	55	80	20	150	4
	I.DCF0		768	624																				
	I.DCF1		-	-																				
1250	DCM2	190	960	780	100	460	340	240	460	110	24	16	21	190	410	160	22	25	207	60	80	20	200	4
	I.DCF0		960	780																				
	I.DCF1		-	-																				
1500	DCM2	230	1152	936	120	490	370	260	500	140	30	16	21	210	450	170	22	30	222	65	90	20	200	4
	I.DCF0		1152	936																				
	I.DCF1		-	-																				
1750	DCM2	270	1344	1092	140	540	410	290	540	160	30	16	21	240	490	185	22	30	237	70	90	20	250	4
	I.DCF0		1344	1092																				
	I.DCF1		-	-																				
2000	DCM2	300	1536	1248	160	580	440	320	560	180	30	16	21	270	510	195	22	30	247	75	100	20	250	4
	I.DCF0		1536	1248																				
	I.DCF1		-	-																				
2250	DCM2	340	1728	1404	180	610	460	340	580	190	36	16	22	290	530	205	25	30	260	80	100	20	250	4
	I.DCF0		1728	1404																				
	I.DCF1		-	-																				
2500	DCM2	380	1920	1560	200	650	500	350	620	200	36	16	24	300	570	215	25	30	270	85	110	20	250	4
	I.DCF0		1920	1560																				
	I.DCF1		-	-																				
2750	DCM2	420	2112	1716	220	670	520	390	630	210	36	16	24	340	580	220	25	35	280	90	110	20	250	4
	I.DCF0		2112	1716																				
	I.DCF1		-	-																				
3000	DCM2	450	2304	1872	240	700	540	400	640	230	42	20	24	340	580	230	25	35	290	95	120	20	300	4
	I.DCF0		2304	1872																				
	I.DCF1		-	-																				
3500	DCM2	530	2688	2184	280	770	600	450	710	250	42	20	26	390	650	250	30	35	315	100	120	20	300	4
	I.DCF0		2688	2184																				
	I.DCF1		-	-																				
4000	DCM2	600	3072	2496	320	810	630	480	720	270	42	20	28	420	660	265	30	35	330	110	130	20	300	4
	I.DCF0		3072	2496																				
	I.DCF1		-	-																				
4500	DCM2	680	3456	2592	360	820	640	520	800	270	48	20	34	460	740	275	35	35	345	120	140	20	300	4
	I.DCF0		3456	2592																				
	I.DCF1		-	-																				
5000	DCM2	750	3840	2880	400	900	710	560	830	270	48	24	35	480	750	295	40	40	375	100	120	20	300	4
	I.DCF0		3840	2880																				
	I.DCF1		-	-																				
6000	DCM2	900	4608	3456	480	990	790	610	910	290	48	24	39	530	830	320	40	40	400	110	130	20	350	4
	I.DCF0		4608	3456																				
	I.DCF1		-	-																				
7000	DCM2	1050	5376	4032	560	1060	850	660	910	330	48	24	39	580	830	335	40	40	415	120	140	20	350	4
	I.DCF0		5376	4032																				
	I.DCF1		-	-																				
8000	DCM2	1200	6141	4608	640	1140	930	700	1050	380	56	30	39	610	960	360	40	45	445	130	150	20	350	4
	I.DCF0		6141	4608																				
	I.DCF1		-	-																				
9000	DCM2	1350	6912	5184	720	1200	980	750	1120	430	56	30	39	660	1030	370	40	45	455	130	150	20	400	4
	I.DCF0		6912	5184																				
	I.DCF1		-	-																				
10000	DCM2	1500	7680	5760	800	1260	1040	790	1160	470	64	30	39	700	1070	390	40	45	475	140	160	20	400	4
	I.DCF0		7680	5760																				
	I.DCF1		-	-																				
12000	DCM2	1800	9216	6912	960	1400	1190	880	1290	470	64	30	48	790	1200	420	50	50	520	150	170	20	500	4
	I.DCF0		9216	6912																				
	I.DCF1		-	-																				

※ 상기 치수는 표준규격으로서 교량의 제한 및 특성에 따라 변경될 수 있음.
 ※ The dimensions shown on the above are based on the standard specification and subject to change.

Spherical Bearings Grade II

분리형 스페리칼 받침 2등급

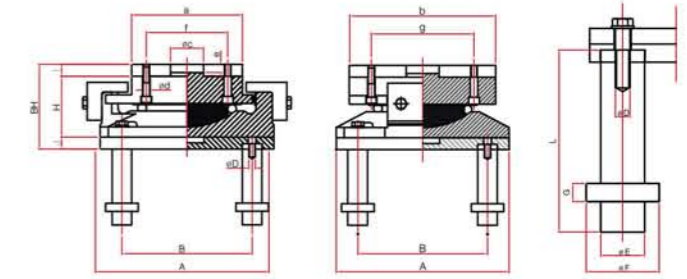


V (kN)	Type	H _{SLS} (kN)	H _{sus} (kN)		Uplift (kN)	Dimension													Anchor Socket						
			Long	Trans		A	B	a	b	φ _c	φ _D	φ _d	e	f	g	H	I	J	BH	φ _E	φ _F	G	L	Q'ty	
500	II.DCF0	80	288	240	40	320	220	160	270	60	16	12	13	110	220	118	22	22	162	35	60	20	150	4	
	II.DCF1		288	-					340																
	II.DCM1		-	240					290																
750	II.DCF0	120	432	360	60	300	210	150	300	70	16	16	16	110	250	123	22	22	167	40	60	20	150	4	
	II.DCF1		432	-					370																
	II.DCM1		-	360					320																
1000	II.DCF0	150	576	480	80	400	280	190	370	80	20	16	18	140	320	135	22	22	179	50	70	20	150	4	
	II.DCF1		576	-					430																
	II.DCM1		-	480					380																
1250	II.DCF0	190	720	600	100	440	330	240	410	100	20	16	18	190	360	145	22	25	195	55	80	20	200	4	
	II.DCF1		720	-					480																
	II.DCM1		-	600					430																
1500	II.DCF0	230	864	720	120	470	360	260	450	110	24	16	20	210	400	155	22	25	202	60	80	20	200	4	
	II.DCF1		864	-					500																
	II.DCM1		-	720					450																
1750	II.DCF0	270	1008	840	140	500	400	290	500	130	24	16	20	240	450	165	22	25	212	65	90	20	250	4	
	II.DCF1		1008	-					530																
	II.DCM1		-	840					480																
2000	II.DCF0	300	1152	960	160	530	420	320	510	140	30	16	20	270	460	185	22	25	232	65	90	20	250	4	
	II.DCF1		1152	-					550																
	II.DCM1		-	960					510																
2250	II.DCF0	340	1298	1080	180	560	450	340	550	150	30	16	22	290	500	190	25	25	240	70	90	20	250	4	
	II.DCF1		1298	-					590																
	II.DCM1		-	1080					460																
2500	II.DCF0	380	1440	1200	200	590	480	350	570	160	30	16	22	300	520	200	25	25	250	75	100	20	250	4	
	II.DCF1		1440	-					620																
	II.DCM1		-	1200					570																
2750	II.DCF0	420	1584	1320	220	620	500	390	590	170	30	16	24	340	540	205	25	25	255	75	100	20	250	4	
	II.DCF1		1584	-					600																
	II.DCM1		-	1320					550																
3000	II.DCF0	450	1728	1440	240	650	510	400	610	180	36	20	24	340	550	210	25	25	260	80	100	20	300	4	
	II.DCF1		1728	-					640																
	II.DCM1		-	1440					580																
3500	II.DCF0	530	2016	1680	280	700	550	450	650	190	36	20	26	390	590	225	30	30	285	85	110	20	300	4	
	II.DCF1		2016	-					690																
	II.DCM1		-	1680					610																
4000	II.DCF0	600	2304	1920	320	750	590	480	700	200	36	20	29	420	640	235	30	30	295	95	120	20	300	4	
	II.DCF1		2304	-					730																
	II.DCM1		-	1920					670																
4500	II.DCF0	680	2592	2160	360	790	620	520	730	220	42	20	29	460	670	250	30	30	310	100	120	20	300	4	
	II.DCF1		2592	-					760																
	II.DCM1		-	2160					700																
5000	II.DCF0	750	2880	2400	400	830	650	560	750	230	42	24	31	480	670	270	35	35	340	110	130	20	300	4	
	II.DCF1		2880	-					790																
	II.DCM1		-	2400					710																
6000	II.DCF0	900	3456	2880	480	910	720	610	820	250	48	24	34	530	740	280	35	35	350	120	140	20	350	4	
	II.DCF1		3456	-					850																
	II.DCM1		-	2880					750																
7000	II.DCF0	1050	4032	3360	560	980	790	660	900	290	48	24	34	580	820	305	35	35	375	120	140	20	350	4	
	II.DCF1		4032	-					910																
	II.DCM1		-	3360					830																
8000	II.DCF0	1200	4608	3840	640	1050	840	700	950	290	56	30	39	610	860	330	40	40	410	130	150	20	350	4	
	II.DCF1		4608	-					990																
	II.DCM1		-	3840					900																
9000	II.DCF0	1350	5184	4320	720	1120	900	750	1010	320	56	30	39	660	920	340	40	40	420	130	140	20	400	6	
	II.DCF1		5184	-					1040																
	II.DCM1		-	4320					950																
10000	II.DCF0	1500	5760	4800	800	1180	960	790	1160	360	64	30	39	700	970	360	40	40	440	140	140	20	400	6	
	II.DCF1		5760	-					1100																
	II.DCM1		-	4800					930																
12000	II.DCF0	1800	6912	5760	960	1320	1100	800	1190	430	64	30	39	710	1100	400	40	40	480	140	150	20	500	6	
	II.DCF1		6912	-					1240																
	II.DCM1		-	5760					1150																
	DCM2								1000					910											

※ 상기 치수는 표준규격으로서 교량의 제원 및 특성에 따라 변경될 수 있음.
 ※ The dimensions shown on the above are based on the standard specification and subject to change.

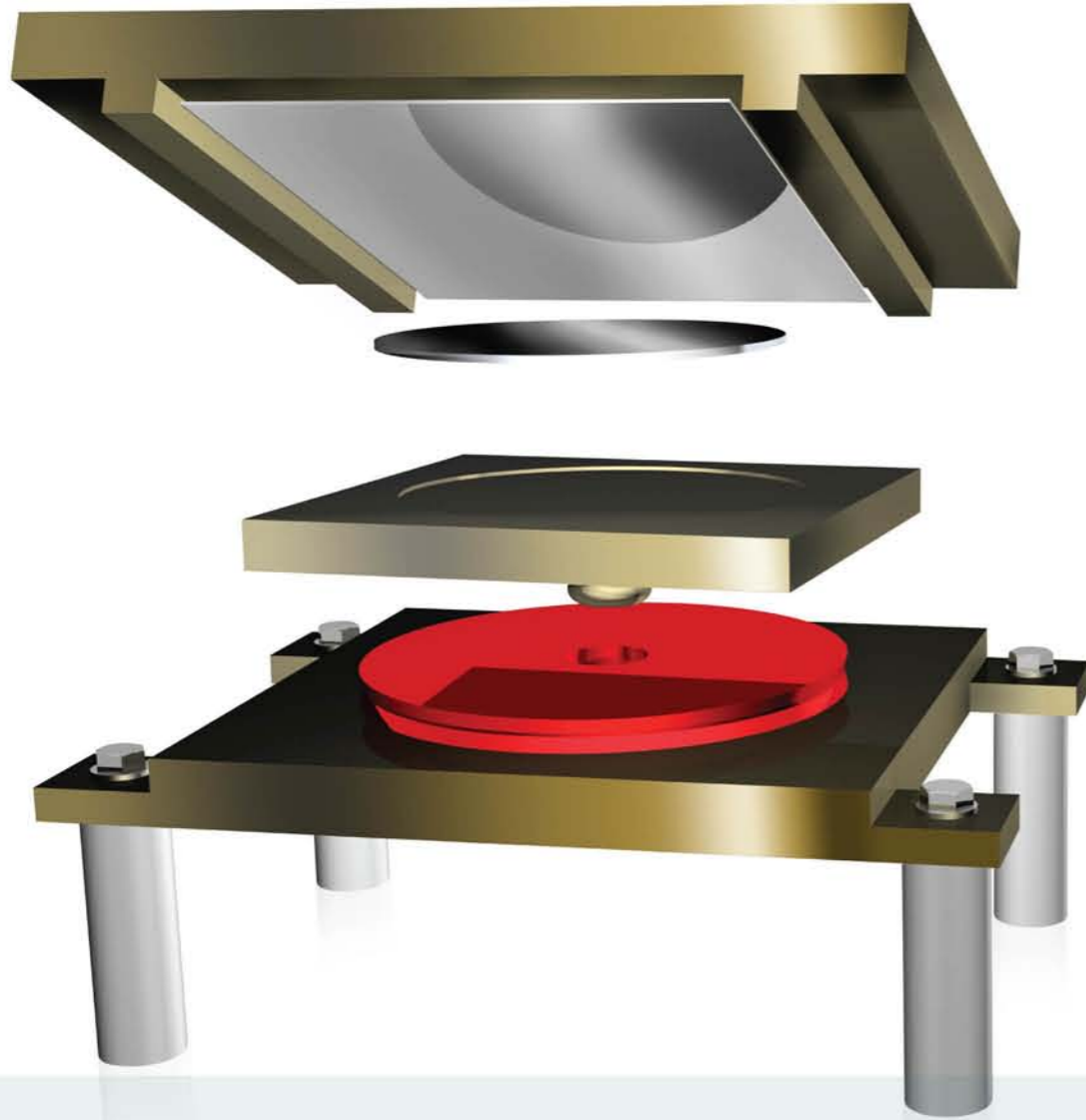
Spherical Bearings Grade III

분리형 스페리칼 받침 3등급



V (kN)	Type	H _{SLS} (kN)	H _{sus} (kN)		Uplift (kN)	Dimension													Anchor Socket						
			Long	Trans		A	B	a	b	φ _c	φ _D	φ _d	e	f	g	H	I	J	BH	φ _E	φ _F	G	L	Q'ty	
500	III.DCF0	80	192	144	40	300	210	150	250	50	12	12	10	100	200	118	150	22	20	162	30	50	20	150	4
	III.DCF1		192	-					320																
	III.DCM1		-	144					270																
750	III.DCF0	120	288	216	60	340	240	150	270	50	16	16	15	100	220	123	150	22	20	167	35	20	150	4	
	III.DCF1		288	-					300																
	III.DCM1		-	216					330																
1000	III.DCF0	150	384	288	80	380	280	170	280	60	16	16	16	120	230	135	150	22	20	179	40	20	150	4	
	III.DCF1		384	-					380																
	III.DCM1		-	288					330																
1250	III.DCF0	190	480	360	100	410	320	230	310	70	20	16	17	180	260	145	200	25	20	195	45	20	200	4	
	III.DCF1		480	-					410																
	III.DCM1		-	360					360																
1500	III.DCF0	230	576	432	120	440	340	250	350	80	20	16	18	200	300	155	200	25	20	202	50	20	200	4	
	III.DCF1		576	-					420																
	III.DCM1		-	432					470																
1750	III.DCF0	270	672	504	140	470	370	270	420	90	20	16	19	220	370	165	250	25	20	212	50	20	250	4	
	III.DCF1		672	-					490																
	III.DCM1		-	504					440																
2000	III.DCF0	300	768	576	160	500	410	310	430	100	24	16	19	260	380	185	250	25	20	232	55	20	250	4	
	III.DCF1		768	-					510																
	III.DCM1		-	576					460																
2250	III.DCF0	340	864	648	180	530	430	320	450	100	24	16	22	270	400	190	250	25	20	240	60	20	250	4	
	III.DCF1		864	-					520																
	III.DCM1		-	648					470																
2500	III.DCF0	380	960	720	200	560	440	340	470	110	24	16	22	290	420	200	250	25	20	250	60	20	250	4	
	III.DCF1		960	-					540																

DISC Bearings



DISC Bearing 은 고강도 폴리우레탄 디스크가 수직하중을 지지하고 회전 변형을 수용하며, 받침 센터의 전단핀이수평력에 저항하는 구조를 가지고 있다. 내구연한이 뛰어나며 유지관리시 디스크의 손상여부의 육안 관찰이 용이하다.

DISC Bearing utilizes a hard elastomeric disc(Polyurethane) to support the vertical loads and a metal key in the center of the bearing to resist horizontal loads. The rotational movements are accommodated through the deformation of the disc.

특징

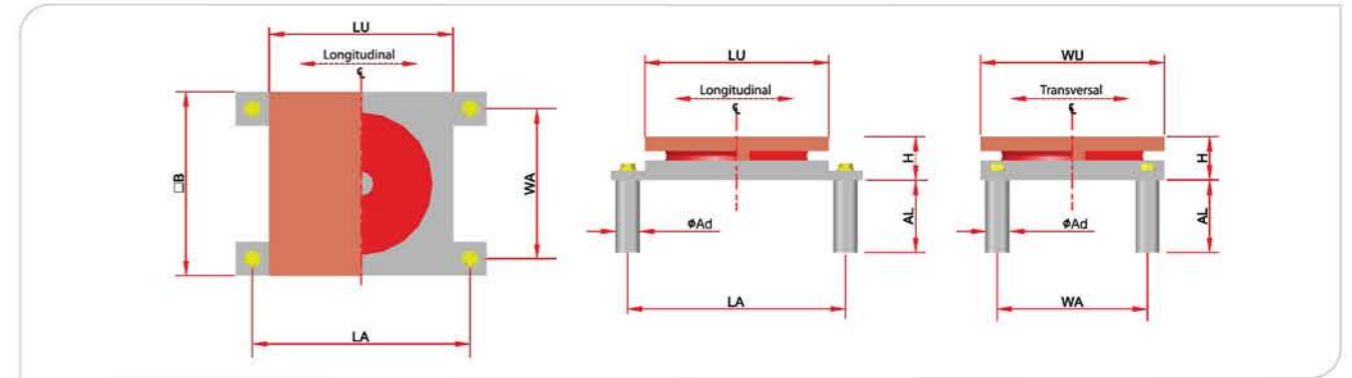
- 경제적인 받침 크기
- 다양한 적용성

Features

- Same vertical and horizontal load capacities with a lower profile than pot bearings.
- Greater service life in most applications

DISC Bearings

고정단 Fixed Type

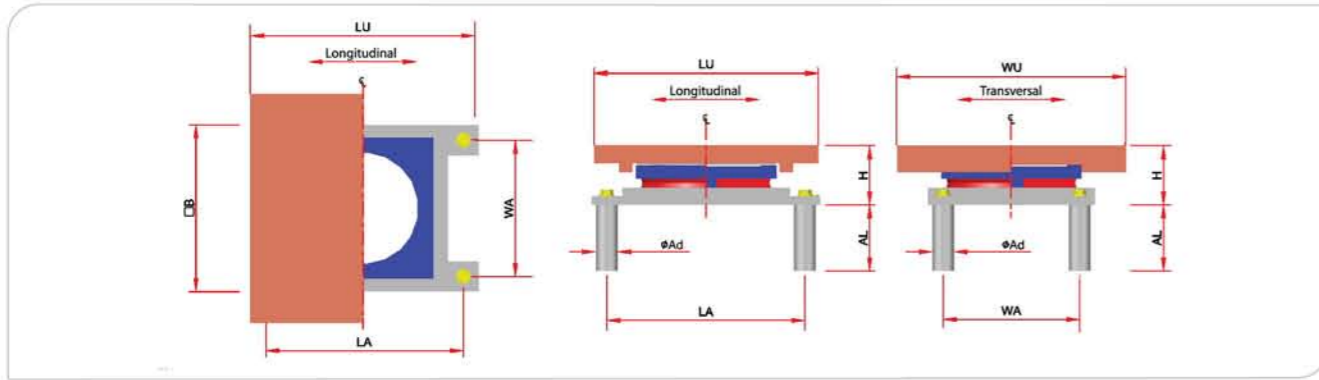


V(Ton)	H(Ton)	□B	WU	LU	H	WA	LA	φAD	AL
100	10	270	270	270	74	330	210	50	100
150	15	320	320	320	80	380	260	50	100
200	20	380	380	380	101	440	320	50	100
250	25	415	420	420	108	475	355	50	150
300	30	445	450	450	108	515	375	60	150
350	35	485	490	490	129	555	415	60	150
400	40	520	520	520	129	600	440	70	150
450	45	540	540	540	135	620	460	70	200
500	50	560	560	560	135	645	475	75	200
550	55	590	590	590	141	675	505	75	200
600	60	640	640	640	161	725	555	75	200
650	65	665	670	670	168	760	570	85	200
700	70	685	690	690	168	780	590	85	200
750	75	695	700	700	168	790	600	85	250
800	80	715	720	720	174	815	615	90	250
850	85	735	740	740	174	835	635	90	250
900	90	765	770	770	189	875	655	100	250
950	95	790	790	790	195	905	675	105	250
1000	100	810	810	810	195	925	695	105	250

※ 상기 치수는 표준치수로서 교량특성에 따라 변경될 수 있음.
 ※ The dimensions shown on the above are based on the standard specification and subject to change.

DISC Bearings

일방향가동단 Guided Type

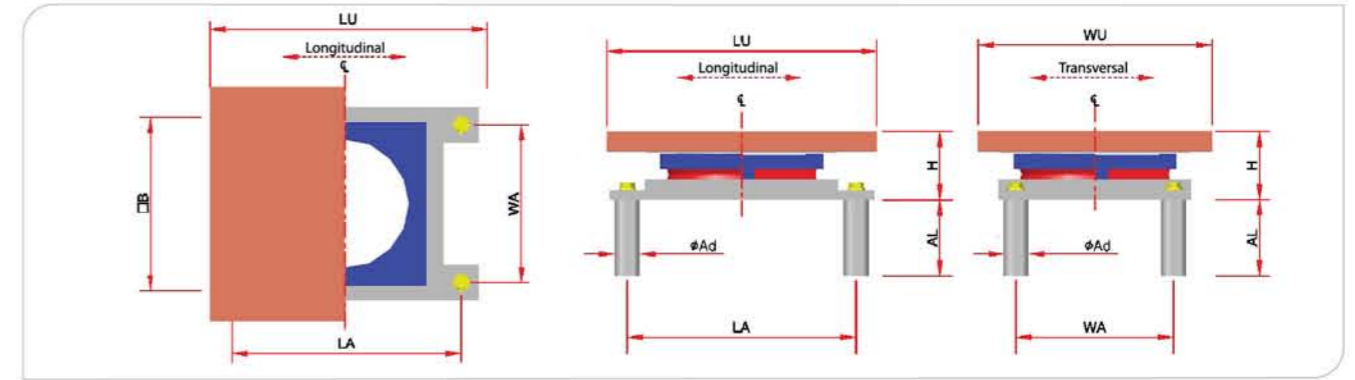


V(Ton)	H(Ton)	□B	WU	LU	H	WA	LA	φAD	AL
100	10	270	340	370	115	330	210	50	100
150	15	320	380	410	120	380	260	50	100
200	20	380	420	450	135	440	320	50	100
250	25	415	450	480	145	475	355	50	150
300	30	445	490	510	146	515	375	60	150
350	35	485	520	540	161	555	415	60	150
400	40	520	560	570	171	600	440	70	150
450	45	540	580	590	186	620	460	70	200
500	50	560	600	610	186	645	475	75	200
550	55	590	640	640	191	675	505	75	200
600	60	640	660	660	216	725	555	75	200
650	65	665	680	680	211	760	570	85	200
700	70	685	710	700	221	780	590	85	200
750	75	695	720	710	231	790	600	85	250
800	80	715	740	730	236	815	615	90	250
850	85	735	760	750	235	835	635	90	250
900	90	765	790	770	256	875	655	100	250
950	95	790	800	790	261	905	675	105	250
1000	100	810	820	810	261	925	695	105	250

※ 상기 치수는 표준치수로서 교량특성에 따라 변경될 수 있음.
 ※ The dimensions shown on the above are based on the standard specification and subject to change.

DISC Bearings

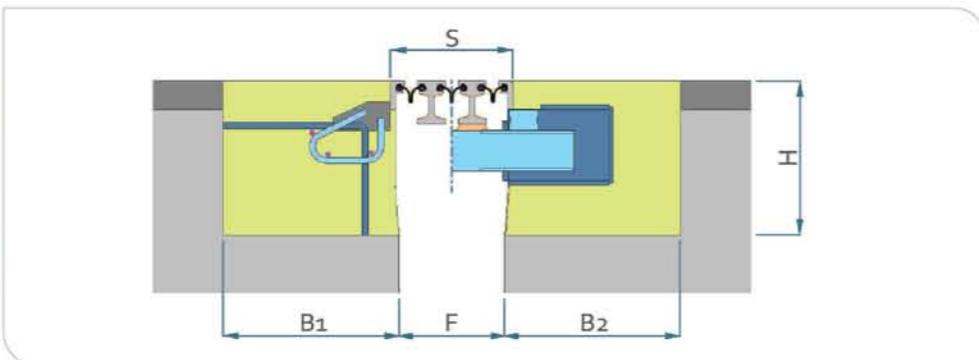
양방향가동단 Multi Type



V(Ton)	H(Ton)	□B	WU	LU	H	WA	LA	φAD	AL
100	5	260	300	350	88	320	200	50	100
150	7.5	310	340	390	101	370	250	50	100
200	10	350	380	430	111	410	290	50	100
250	12.5	385	410	460	126	445	325	50	100
300	15	415	460	490	126	475	355	50	100
350	17.5	445	470	520	131	505	385	50	100
400	20	465	500	550	131	525	405	50	100
450	22.5	500	540	570	146	560	440	50	100
500	25	520	560	590	146	580	460	50	100
550	27.5	540	590	620	161	600	480	50	100
600	30	560	610	640	161	620	500	50	100
650	32.5	605	630	660	171	665	545	50	150
700	35	625	650	680	176	685	565	50	150
750	7.5	645	660	690	176	705	585	50	150
800	40	655	680	710	176	725	585	60	150
850	42.5	675	700	730	191	745	505	60	150
900	45	695	720	750	191	765	625	60	150
950	47.5	710	730	760	191	780	640	60	150
1000	50	730	750	780	206	800	660	60	150

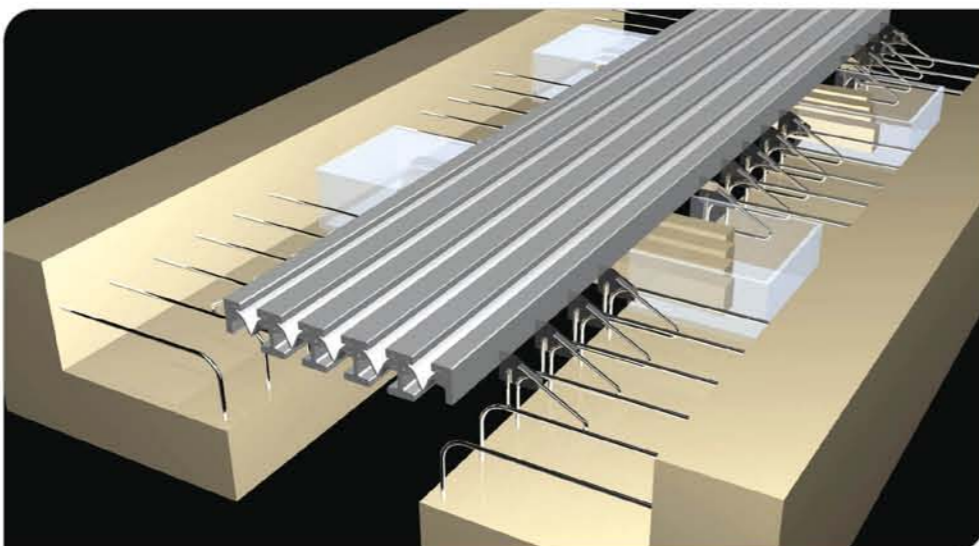
※ 상기 치수는 표준치수로서 교량특성에 따라 변경될 수 있음.
 ※ The dimensions shown on the above are based on the standard specification and subject to change.

Modular Expansion Joints



- 구조물의 하중 및 변위 수용
- 우수한 내구성
- 완벽한 방수처리

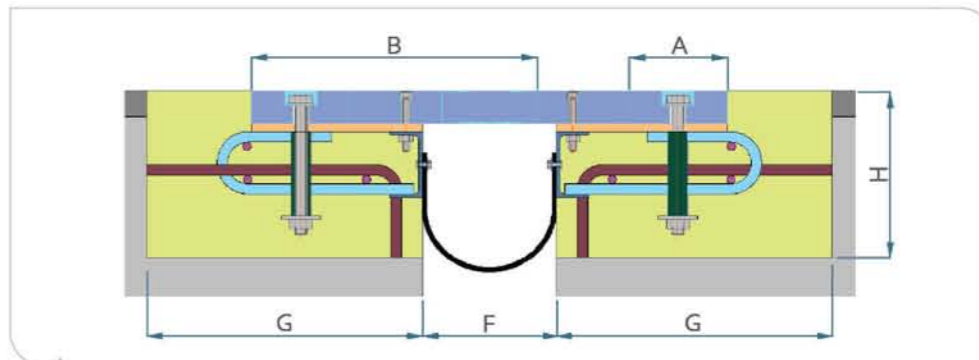
- Accommodation of traffic loads and movements
- Long durability
- Absolute water tightness



Type	Movement (mm)	S			F			BLOCK OUT		
		Min.	Mid.	Max.	Min.	Mid.	Max.	B1	B2	H
DRJ 80	± 40	5	45	85	35	75	115	200	200	250
DRJ 100	± 50	5	55	105	35	85	135	200	200	250
DRJ 160	± 80	128	208	288	80	160	240	300	300	250
DRJ 240	± 120	192	312	432	140	260	380	300	480	400
DRJ 320	± 160	256	416	576	200	360	520	300	560	400
DRJ 400	± 200	320	520	720	270	470	670	300	640	400
DRJ 480	± 240	384	624	864	330	570	810	300	720	400
DRJ 560	± 280	448	728	1008	390	670	950	300	800	420
DRJ 640	± 320	512	832	1152	460	780	1100	300	880	420
DRJ 720	± 360	576	936	1296	520	880	1240	300	960	450
DRJ 800	± 400	640	1040	1440	580	980	1380	300	1040	450

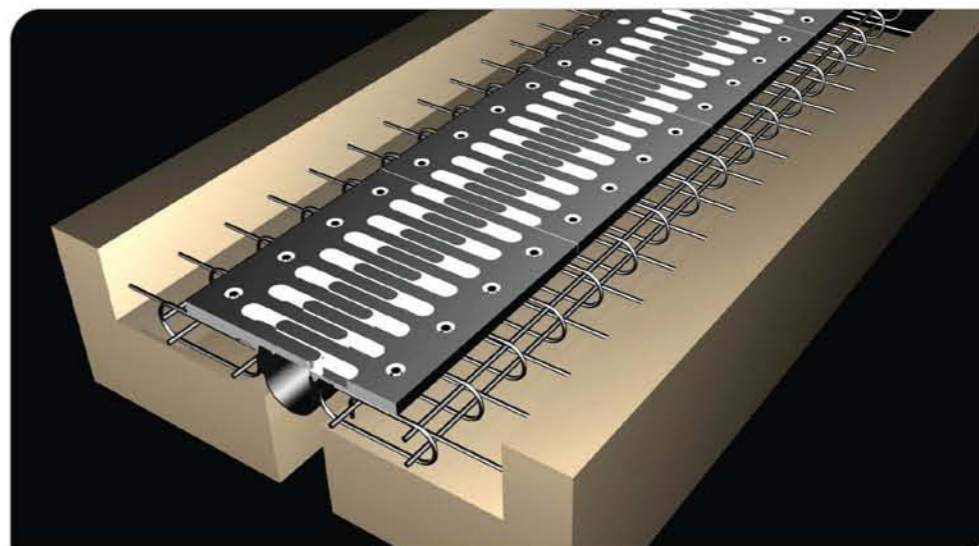
※ 상기 치수는 표준치수로서 교량특성에 따라 변경될 수 있음.
 ※ The dimensions shown on the above are based on the standard specification and subject to change.

Finger Joints



- 구조물의 하중 및 변위 수용
- 우수한 내구성 및 주행성
- 소음 저감

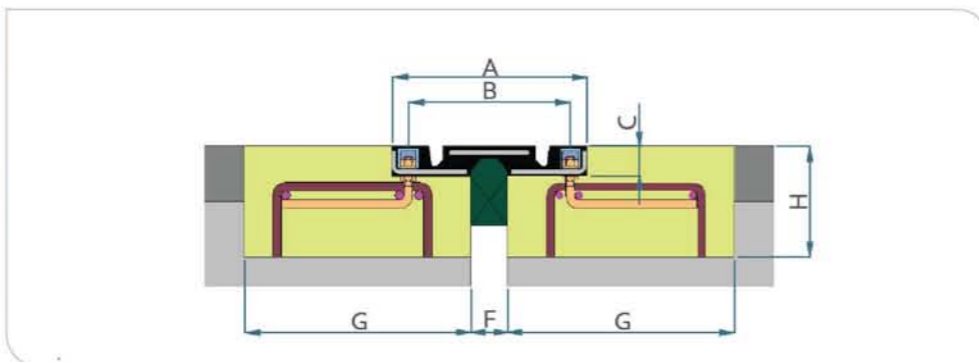
- Accommodation of traffic loads and movements
- Long durability
- Comfortable driving
- Low noise



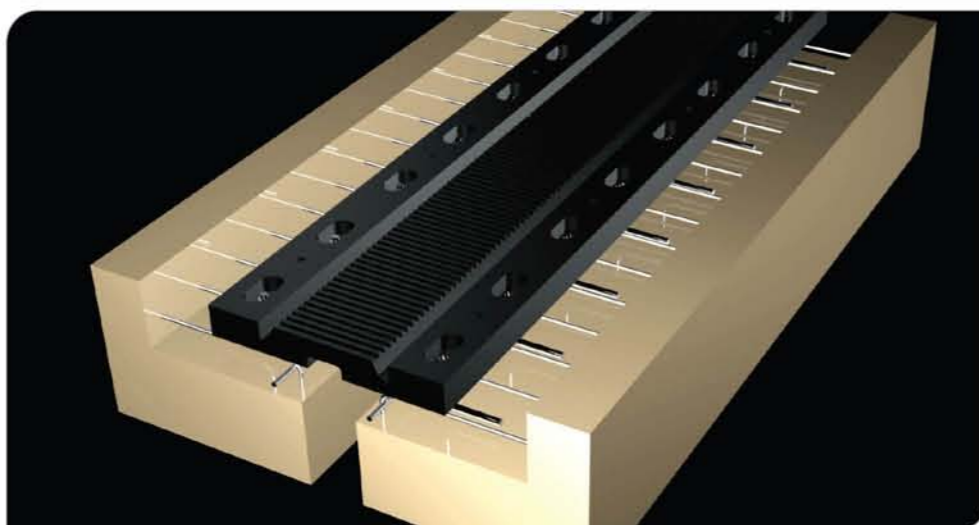
Type	Movement (mm)	A	B	F			BLOCK OUT	
				Min.	Mid.	Max.	G	H
DFJ 30	± 15	110	185	50	65	80	315	200
DFJ 50	± 25	110	205	50	75	100	325	200
DFJ 80	± 40	110	245	50	90	130	340	200
DFJ 100	± 50	110	265	50	100	150	350	200
DFJ 120	± 60	110	295	50	110	170	360	200
DFJ 150	± 75	130	345	50	125	200	440	250
DFJ 200	± 100	130	405	50	150	250	450	250
DFJ 250	± 125	150	485	60	185	310	500	250
DFJ 300	± 150	150	545	60	210	360	520	250
DFJ 350	± 175	180	635	60	235	410	570	250
DFJ 400	± 200	180	695	60	260	460	600	300
DFJ 450	± 225	180	755	60	285	510	620	300
DFJ 500	± 250	180	815	60	310	560	650	300
DFJ 550	± 275	180	875	60	335	610	670	300
DFJ 600	± 300	180	935	60	360	660	700	300

※ 상기 치수는 표준치수로서 교량특성에 따라 변경될 수 있음.
 ※ The dimensions shown on the above are based on the standard specification and subject to change.

Transflex Expansion Joints



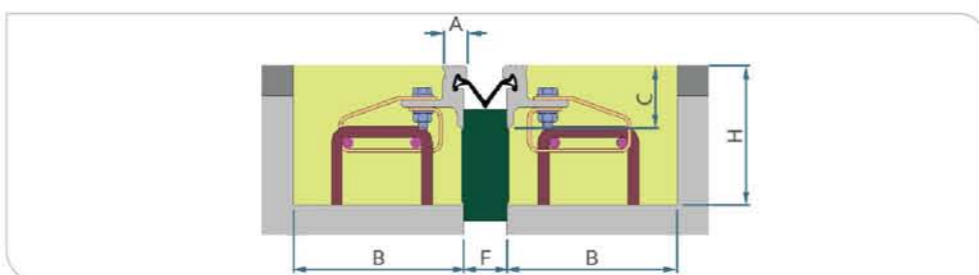
- 주행성 양호
- 소음 저감
- 간편한 시공
- Comfortable driving
- Low noise
- Easy installation



Type	Movement (mm)	A	B	C	F	BLOCK OUT	
						G	H
TF 30	± 15	240	185	32	35	302.5	150
TF 45	± 22.5	250	205	35	45	302.5	150
TF 50	± 25	268	219	40	50	307	150
TF 70	± 35	342	279	46	65	337	150
TF 80	± 40	430	340	54	100	365	160
TF 100	± 50	577	497	54	100	488.5	160
TF 160	± 80	706	612	76	120	543	210
TF 230	± 115	875	781	93	160	607.5	240
TF 330	± 165	1185	1073	127	215	785	300

AL Joints

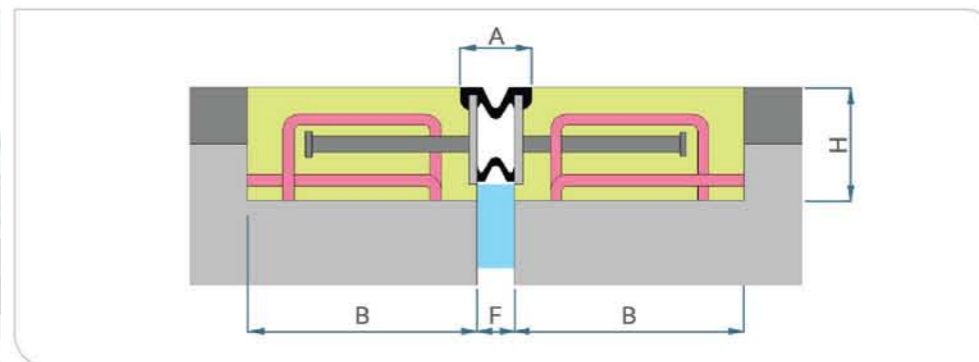
- 주행성 양호
- 간편한 시공
- Comfortable driving
- Easy installation



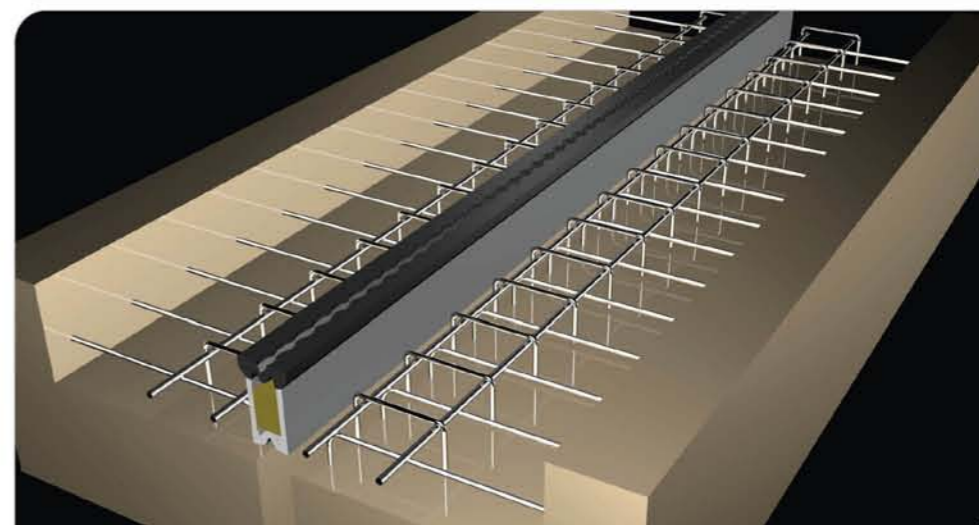
Type	Movement (mm)	A	C	F	BLOCK OUT	
					G	H
50	± 25	35	90	35	250	200
80	± 40	35	90	50	250	200

※ 상기 치수는 표준치수로서 교량특성에 따라 변경될 수 있음.
 ※ The dimensions shown on the above are based on the standard specification and subject to change.

Monocell Joints



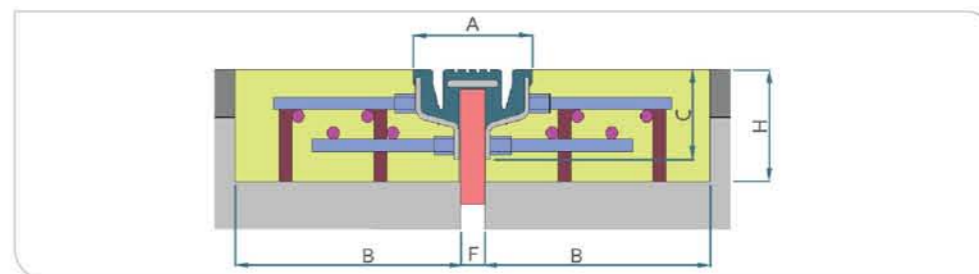
- 주행성 양호
- 소음 저감
- 간편한 시공
- Comfortable driving
- Low noise
- Easy installation



Type	Movement (mm)	A	F			BLOCK OUT	
			Min.	Mid.	Max.	G	H
2G	± 10	80	30	40	50	300	150
4G	± 20	120	60	80	100	300	150
6G	± 30	130	60	90	120	350	150

NB Joints

- 주행성 양호
- 간편한 시공
- Comfortable driving
- Easy installation



Type	Movement (mm)	A	C	F	BLOCK OUT	
					G	H
NB 35	± 17.5	152	106	33	300	170
NB 50	± 25	180	115	55	300	170
NB 80	± 40	255	125	95	300	170
NB120	± 60	332	154	118	330	200

※ 상기 치수는 표준치수로서 교량특성에 따라 변경될 수 있음.
 ※ The dimensions shown on the above are based on the standard specification and subject to change.

References

영동고속도로
현대건설(주), 1991
교량받침 납품 및 설치공사
Youngdong Expressway
Hyundai E&C, 1991
Supply & Installation of Bearings

경춘선 복선화 6공구
현대산업개발(주), 2009
신축이음장치 납품 및 설치공사
**Double Tracking Railway
Kyung Chun Line**
Hyundai Development Co., 2009
Supply & Installation of
Expansion Joint

경인아라뱃길 5공구
현대산업개발(주) 2011
교량받침, 펜스 납품 및 설치공사
Kyungin Canal #5
Hyundai Development Co., 2011
Supply & Installation of Bearings
and Fence

중앙선 복선화 5공구
쌍용건설(주), 2008
교량받침 납품 및 설치공사
**Double Tracking Railway
Joongang Line**
Ssangyong E&C, 2008
Supply & Installation of Bearings

익산-장수간 고속도로 8공구
삼부토건(주), 1999-2007
교량받침, 신축이음장치 납품 및 설치공사
Iksan-Jangsu Expressway
Sambu Construction Co., 1999-2007
Supply & Installation of Bearings and
Expansion Joints

둔덕-주삼간 도로
SK건설(주), 2008
신축이음장치 납품 및 설치공사
Dunduck-jusam Detour Road
SK E&C, 2008
Supply & Installation of
Expansion Joint

서울-춘천간 고속도로 3공구
현대건설(주), 2009
신축이음장치 납품
**Seoul-Chuncheon
Expressway**
Hyundai E&C, 2009
Supply of Expansion Joints

서울-춘천간 고속도로 7공구
현대산업개발(주), 2009
신축이음장치 납품 및 설치공사
**Seoul-Chuncheon
Expressway**
Hyundai Development Co., 2009
Supply of Expansion Joints

대구도시철도 3-1공구
포스코건설(주) 2010 -
교량받침 납품 및 설치공사
Daegu Metro #3-1
Posco E&C, 2010 -
Supply & Installation of Bearings

부산-김해 경전철1&2공구
현대산업개발(주), 2006-9
교량받침 납품 및 설치공사
**Busan-Gimhae Light Rail
Transit**
Hyundai Development Co., 2006-9
Supply & Installation of Bearings

북항대교
현대산업개발(주) 2009 -
교량받침, LUD 납품 및 설치공사
Bukhang Bridge
Hyundai Development Co., 2009 -
Supply & Installation of Bearings
and LUDs

안골대교
대림산업(주) 2011-
연진받침 납품 및 설치공사
Angol Bridge
Hyundai Development Co., 2011-
Supply & Installation of SPis

Performance Tester

Verical Load Max. 30,000kN
Horizontal Load Max. 10,000kN
Dynamic Load Max. 2,000kN
Max Velocity 100mm/sec.





www.daechangcorp.com



INNOBIZ



본사/공장 Head Office & Factory #1

충북 음성군 대소면 소석로 134
134 Sosuk-ro Daeso-myun Eumseong-gun
Chungcheongbuk-do, Korea
Tel: 043 877 8258 [+82 43 877 8258]
Fax: 043 881 0180 [+82 43 881 0180]

서울사무소 Seoul Office

경기도 성남시 분당구 수내동 8-1 코아빌딩 2층
2F. Core Bldg, Sunae-dong Bundang-gu Seongnam
Gyeonggi-do, Korea
Tel: 070 4174 6800 [+82 70 4174 6800]
Fax: 031 718 0181 [+82 31 718 0181]

제2공장 Factory #2

경남 김해시 장유면 부곡리 254-15번지
254-15 Bugok-ri, Jangyu-myeon Gimhae-si
Gyeongsangnam-do, Korea
Tel: 055 314 8086 [+82 55 314 8086]